

# Phantom US

standalone

92.5"x92.5" h.38.6"

## Technical features

Max water capacity	555 gal.
Whirlpool jets	40 mini jets 20 jets
Airpool jets	40

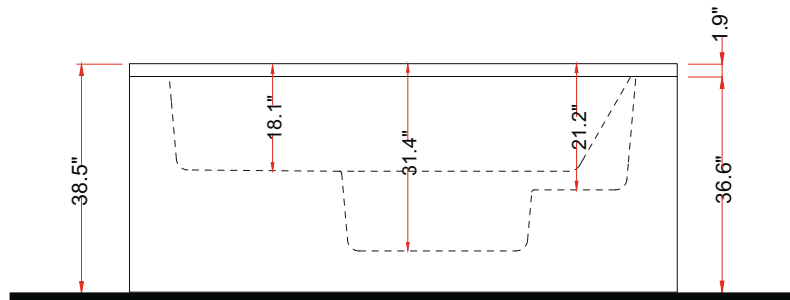
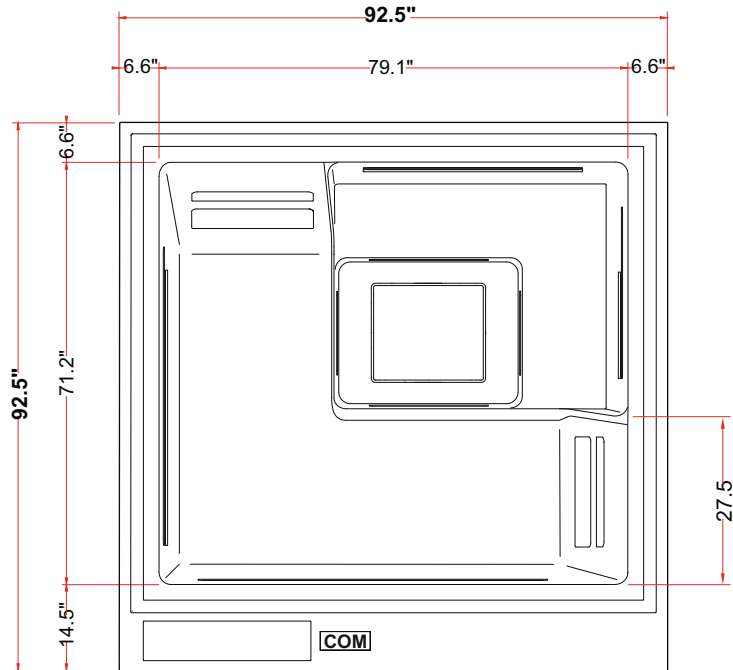
## Dimensional features

Packaging volume	226 ft <sup>3</sup>
Dry weight	992 lb
Wet weight	5622 lb

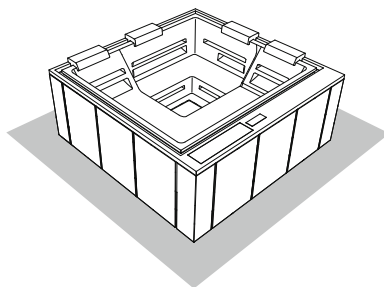
## Electrical features

Voltage	2 x 120 V
Amperage	51.74 A
Frequency	60 Hz
WHIRLPOOL absorbed power	2.76 Kw motor 1 2.76 Kw motor 2
RECIRCULATION absorbed power	0.15 Kw
Temperature controller	5.5 Kw
AIRPOOL motor power	0.8 Kw

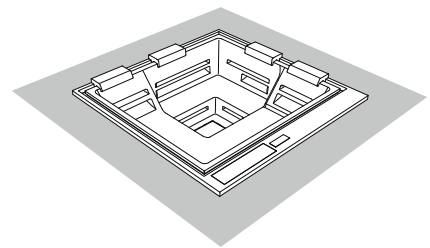
## Technical drawing



## Installations allowed



standalone

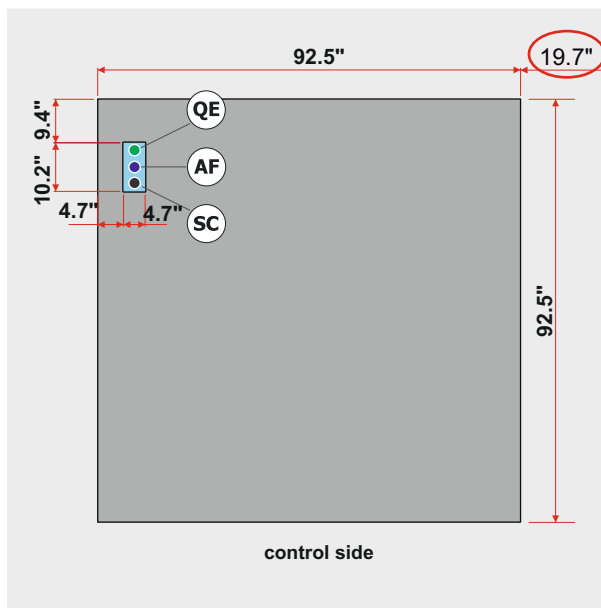


built-in standalone

# Phantom

92.5"x92.5" h.38.6"

## Hydraulic installation - Electrical installation



**standalone** - mandatory empty perimeter area

**built-in** - mandatory area for technical room for inspection

The connections must be placed inside the blue area

● **QE** Electrical connection

● **AF** Cold water connection - 1/2" inch

● **SC** Recommended floor drain Ø40mm

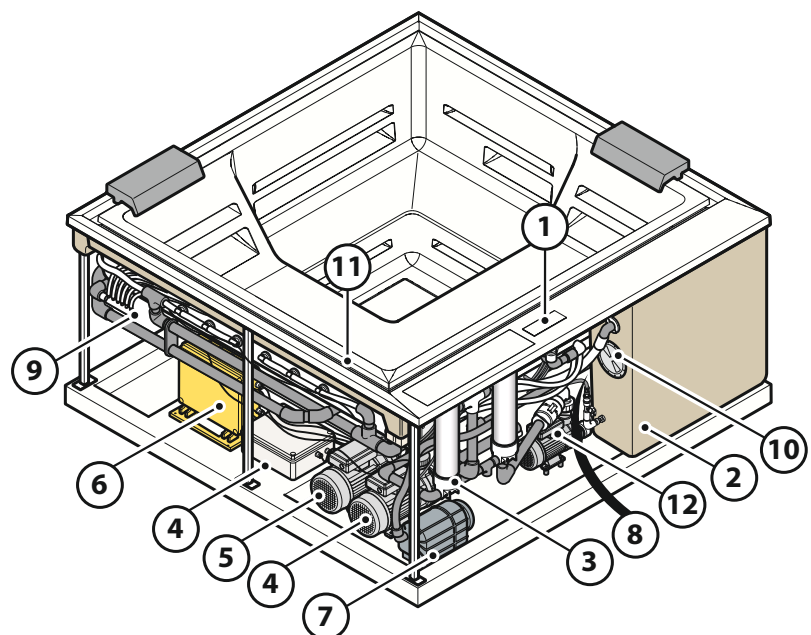
**!** It is recommended to install upstream of the hydraulic system of filter faucets. The company declines problems arising from failure to install them

### NOTE

- The electrical system to which the mini-pool will be connected must comply with CEE standards
- **The minipool should be connected to a mains isolator (magneto-thermic switch) with min. 3mm spaced contacts and an RCD (differential switch) of max 30mA**
- It is necessary that the building electrical system is equipped with a bipolar disconnecting device
- The electrical system must be equipped with an efficient ground system
- The minipool must be connected to the building's ground system permanently

## Main components

- 1 Control panel
- 2 Compensation tank
- 3 Paper filter
- 4 Whirlpool pump 1
- 5 Whirlpool pump 2 (optional for SP1)
- 6 Control units
- 7 blower pump (available only for PR1-optional)
- 8 Heater
- 9 Ozonizator
- 10 Inspection of compensation tank
- 11 Overflow
- 12 Circulation pump

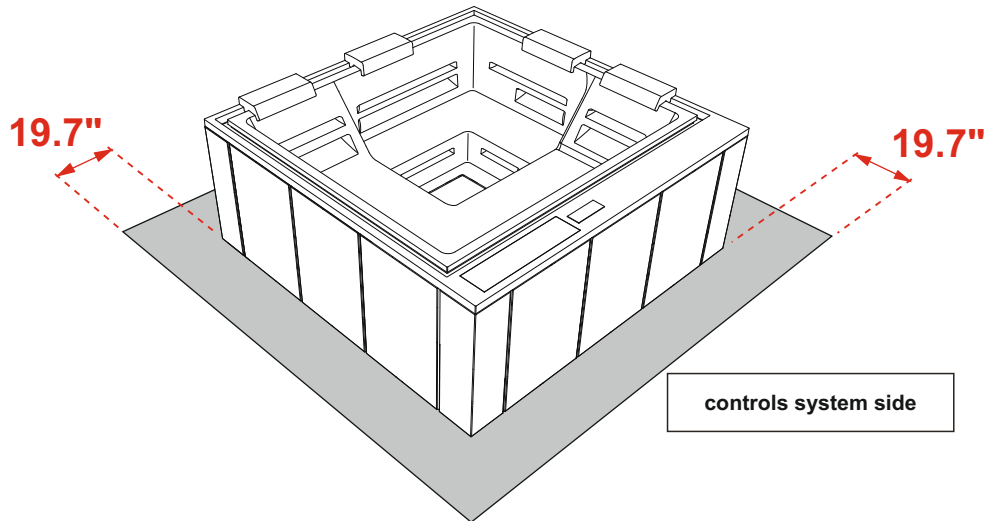


# Phantom

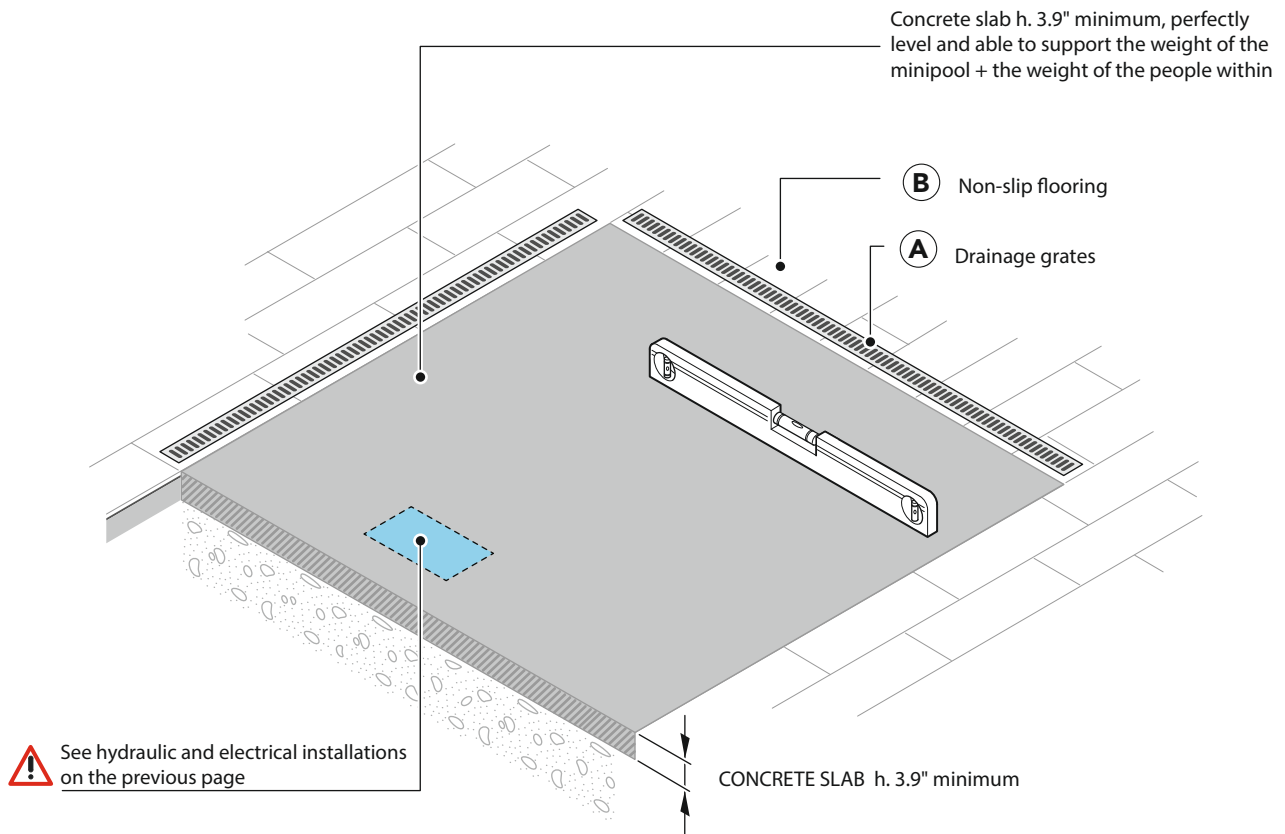
92.5"x92.5" h.38.6"

## Installazione fuori terra / Free-standing installation

standalone - mandatory empty perimeter area



## Preparation of the installation site

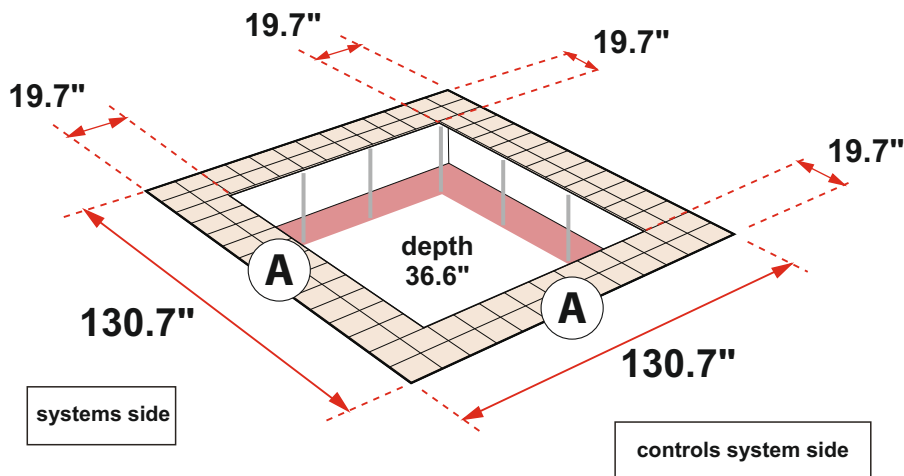


**Built in installation with lifter**

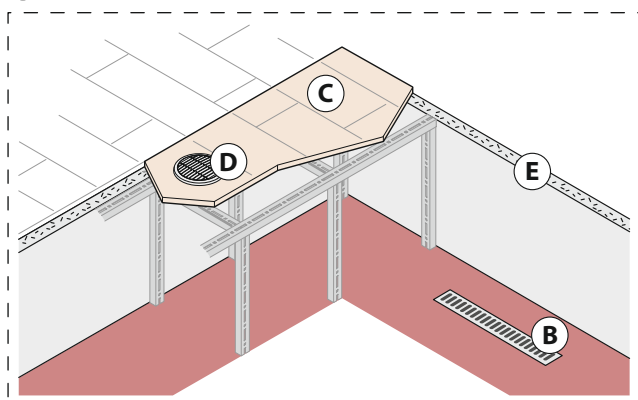
# Phantom

92.5"x92.5" h.38.6"

*Built in installation*



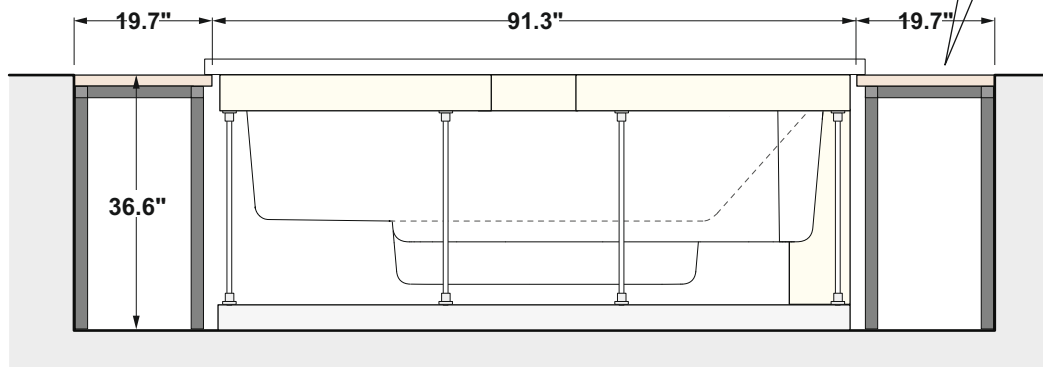
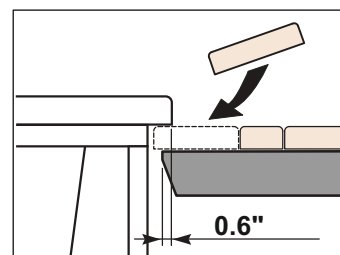
**(A) INSPECTION COMPARTMENT DETAILS**



- (A) Perimetric inspection compartment of 19.7" with removable floor
- (B) Internal drainage grates
- (C) Non-slip flooring
- (D) n°2 Ø5.9" vents to ensure proper ventilation of the technical compartment
- (E) Insulation: prevents damage from freezing and condensation

NB: we recommend to let the spa discharge its weight on the base and not on the edges.

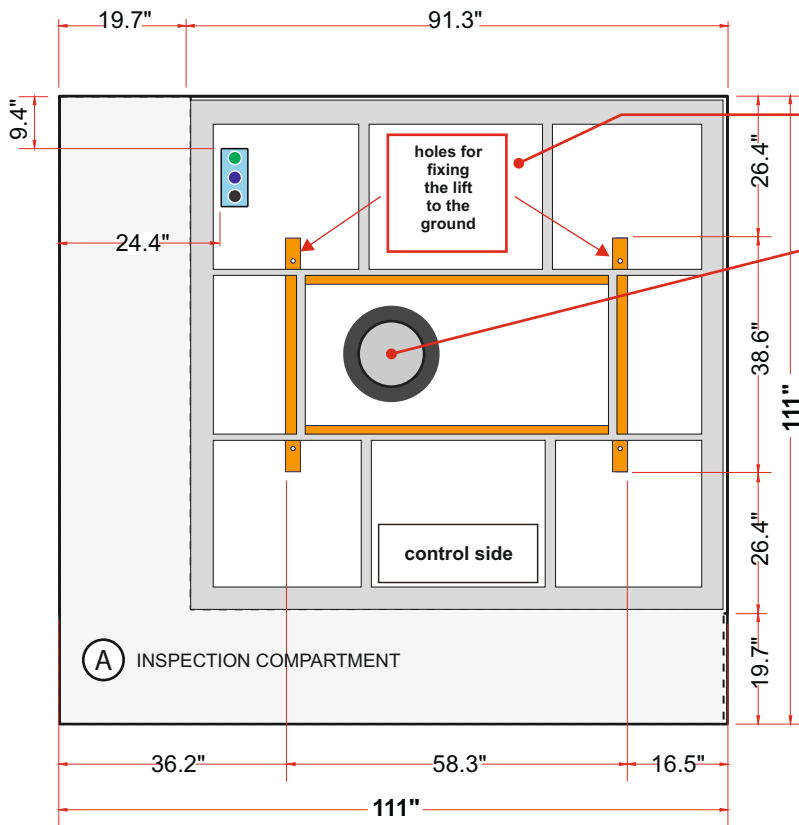
We advice to fix the last line of tiles near the edge once the installation is finished, the result will be a good match between the spa and the covering.



**Built in installation with lifter**

# Phantom

92.5"x92.5" h.38.6"



**ATTENTION**

FIXE THE LIFTER TO THE GROUND ONLY AFTER YOU MAKE THE EXCURSION TEST WITH THE SUBFRAME, WITHOUT THE MINIPOOL.

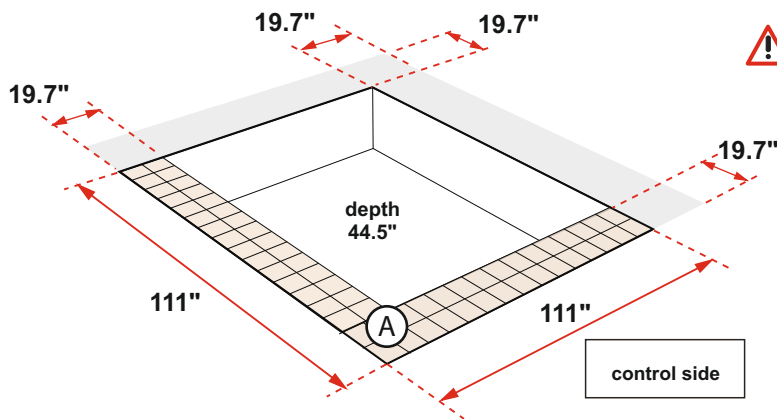
THE AIR CHAMBER OF LIFTER MUST BE ALWAYS ON THE SAME SIDE OF THE CONTROL PANEL OF THE MINIPOOL

The connections must be placed inside the blue area

- **QE** Electrical connection
- **AF** Cold water connection - 1/2" inch
- **SC** Recommended floor drain Ø40mm

**ATTENTION**

It is recommended to install upstream of the hydraulic system of filter faucets. The company declines problems arising from failure to install them



The installation with lifter is in the center of the room, no side can be placed against the wall, a minimum distance of 19.7" be maintained.

Like built-in installations (see previous pg.) must be installed an internal drainage grates, a non-slip flooring, two vents Ø5.9" to ensure a proper ventilation of the technical compartment and an insulation to prevent damages from freezing and condensation.

(A) INSPECTION COMPARTMENT with removable floor (systems side only)

NB: we recommend to let the spa discharge its weight on the base and not on the edges.

