

CASA BIUI

NOVA



COMERCIAL SECTION



GENERAL INFORMATION

CASA BLUI – NOVA

Capacity : 5 people

Seating positions: 5 positions

Dimensions : (91 x 91 x 31)" / (231 x 231 x 78)cm

The Nova is a square-format hot tub engineered to deliver both comfort and performance. Its two full-body lounge seats and three upright positions allow simultaneous social and therapeutic use.

With a total of 42 massage points—28 stainless-steel hydro jets and 14 air nozzles, the Nova delivers a complete, targeted hydromassage that balances intensity and comfort for a thoroughly indulgent experience.

With a clean, modern exterior available in five acrylic shell colors and two cabinet finishes, the Nova integrates seamlessly into decks or terraces in your state and beyond.





KEY FEATURES & BENEFITS

Ergonomic Seating Configuration

Two full-body loungers plus three upright seats accommodate up to three users with individualized hydrotherapy.

Massage System

28 stainless-steel hydro-jets and 14 air nozzles deliver targeted relief from neck to calves.

Smart Control & Connectivity

Intuitive touch-panel operation with optional Wi-Fi Spa Control for remote scheduling and diagnostics.

Advanced Water Care

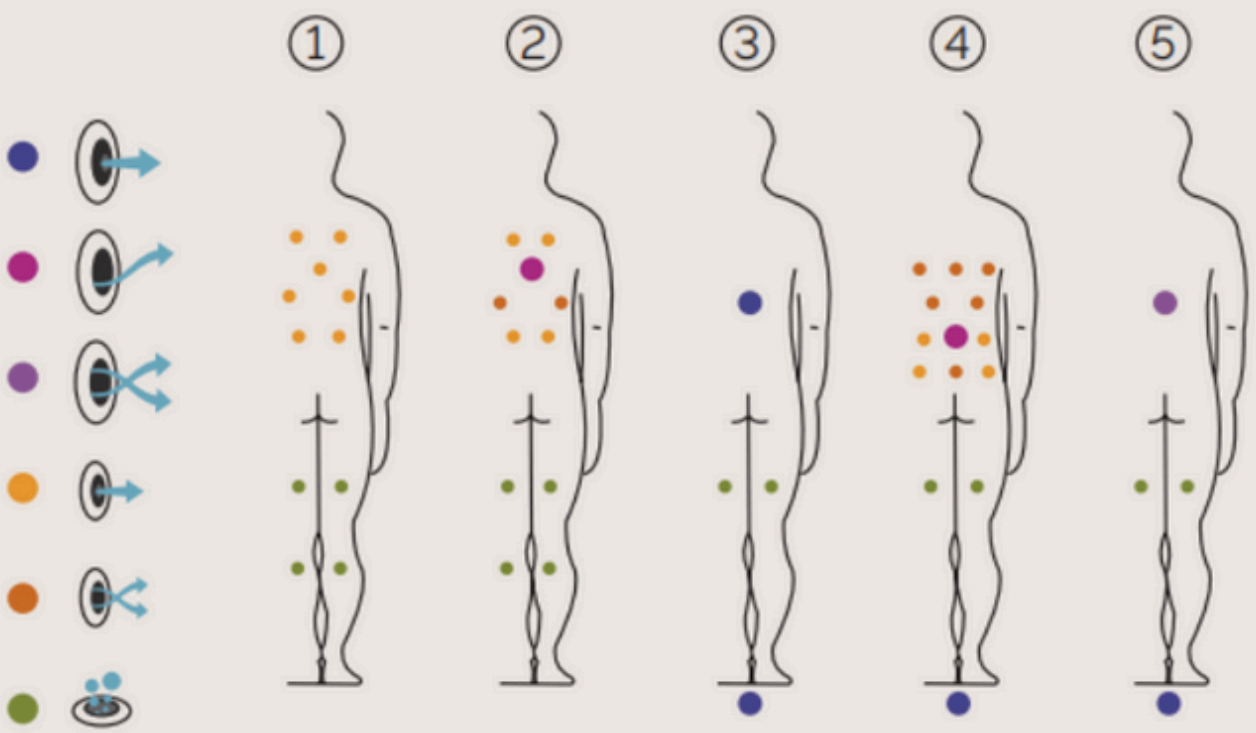
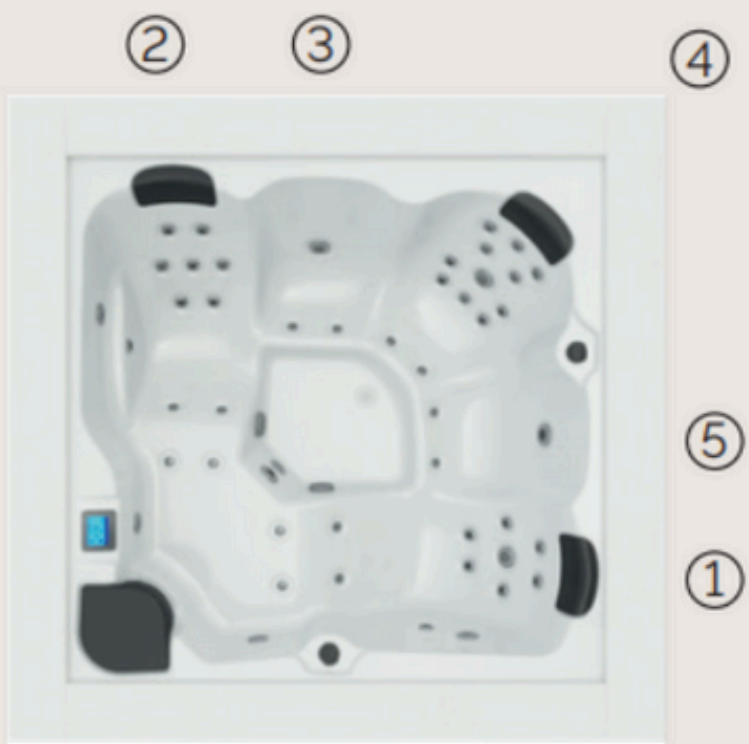
Standard UV treatment and EcoSpa filtration keep water crystal-clear with minimal chemical use.

Thermal Efficiency

Optional Nordic Insulation System and eco-efficient cabinet reduce heat loss by up to 25 %, lowering operating costs.

Customizable Ambience

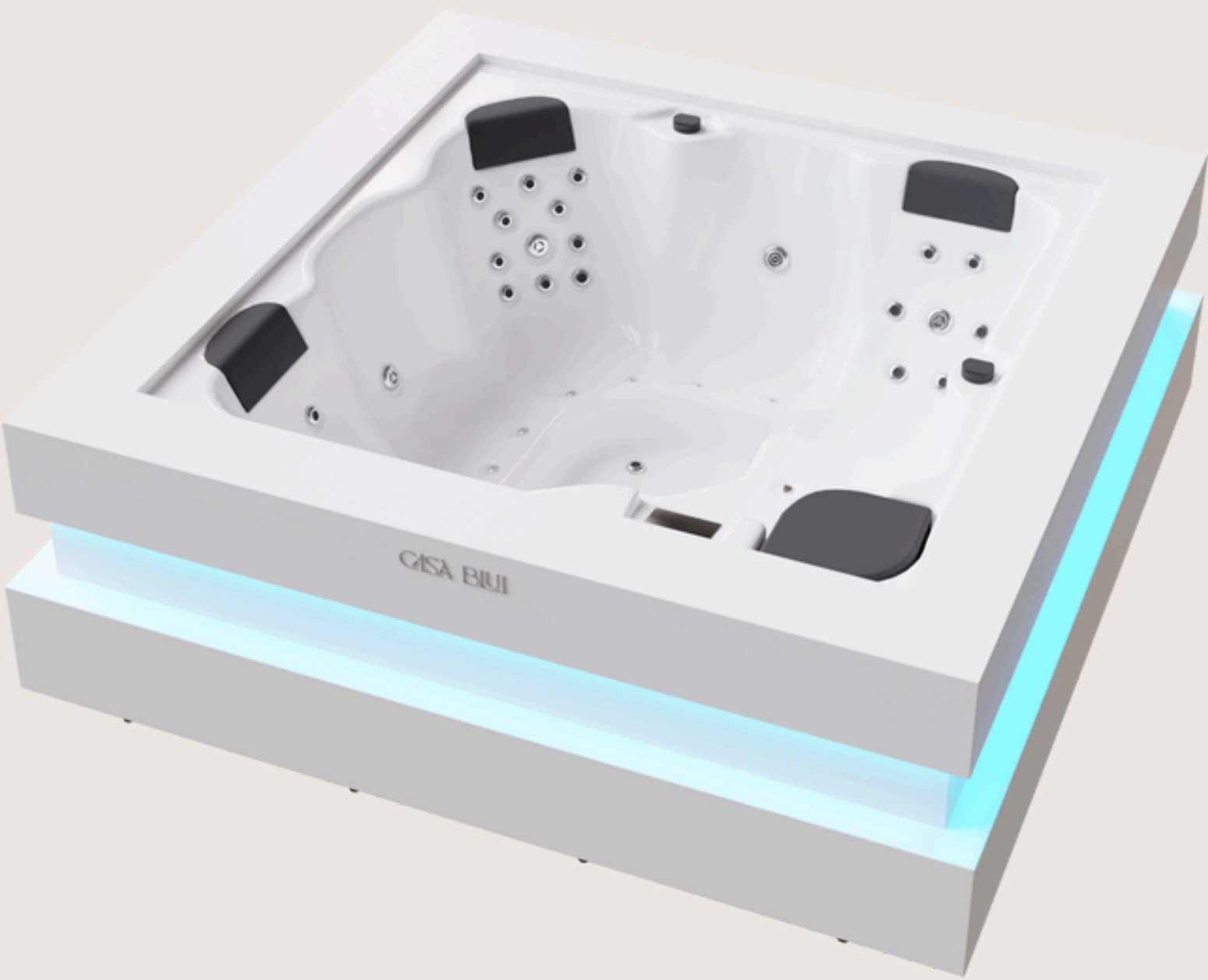
Colour Sense LED lighting package and optional Surround Bluetooth Audio let users personalize mood and sound.





TECHNICAL SPECIFICATIONS

Dimensions:	231 × 231 × 78 cm
Water Capacity:	975 L
Dry Weight:	450 kg
Filled Weight:	1 425 kg
Power Requirement:	3 400 W / 14.6 A @ 230 V
Voltage Options:	220 V / 400 V III
Water Massage Pump:	1 800 W (2.5 HP)
Relax Impact Pump:	1 150 W
Recirculation Pump:	200 W
Water Heater:	3 000 W
Filter Type:	Cartridge





FINISHES & OPTIONS

Shell Finishes (Acrylic Colors)



White



Silver



Sterling



Pearl
Shadow



Alba

Furniture Finishes (Outdoor Cabinet)



Grey Storm



White

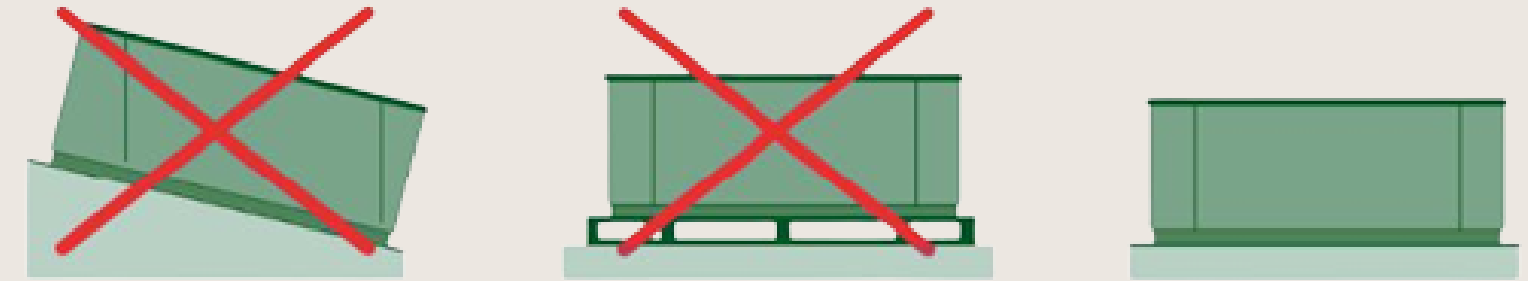
Optional Premium Packages:

- Nordic Insulation System (improves thermal retention)
- Wi-Fi Spa Control (remote monitoring & diagnostics)
- Surround Bluetooth Audio (includes subwoofer & speaker set)
- Pureline LED lightning

INSTALLATION REQUIREMENTS

Position and location of the spa

Position the Spa horizontally, placing the whole base of the unit on a smooth, flat and level surface, capable of supporting the weight when used (full of water, plus the weight of the bathers). The Spa cannot be placed on a curved surface or on blocks.



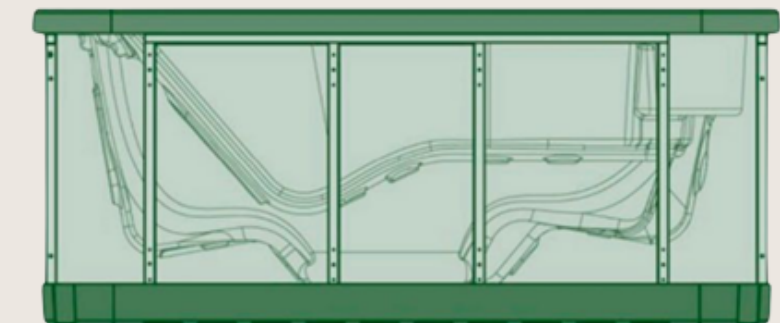
Outdoor Installation

Do not expose the Spa to sunlight when it is empty and without a protection cover. Remember that prolonged exposure to sunlight may damage the surface of the Spa and its accessories. Acrylic rapidly absorbs heat from the sunrays reaching very high temperatures which will damage the Spa. Maximum absorption temperature is 60C



Portable levelling Spas

Some spas come with an adjustable metal structure to facilitate their installation. This structure has several points of support. Before filling the spa, these points of support should be adjusted to ensure they are all in contact with the ground.





PRE INSTALLATION REQUIREMENTS

Foundation

Reinforced concrete pad, at least 4" thick, fully level, capable of supporting ≥ 20000 lbs.

Electrical Supply

Dedicated 220 V circuit with GFCI protection, rated 50 A. Junction box must be routed to the service panel location.

Service Clearances

A minimum clearance of 25 inches on each side is required for spa installation and maintenance.

Drainage & Ventilation

Ensure an unobstructed drain point and adequate airflow beneath the cabinet to prevent moisture buildup.



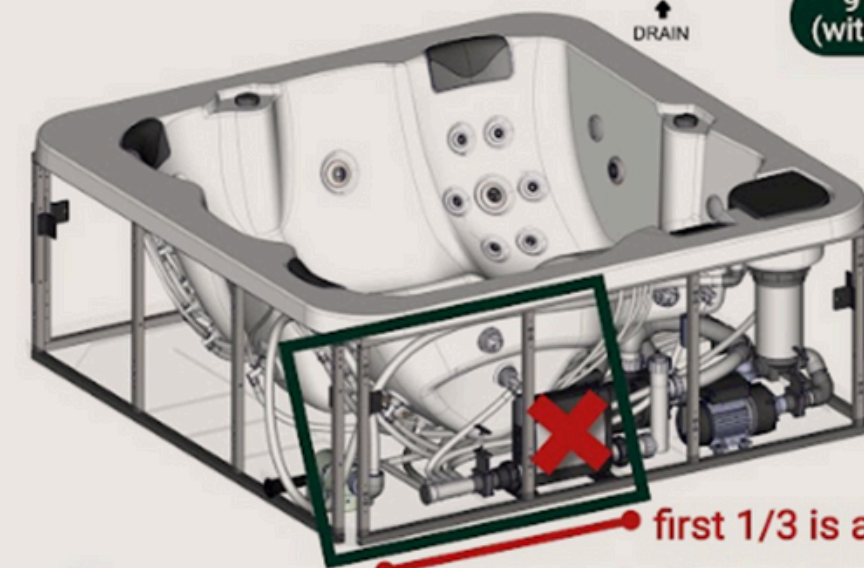
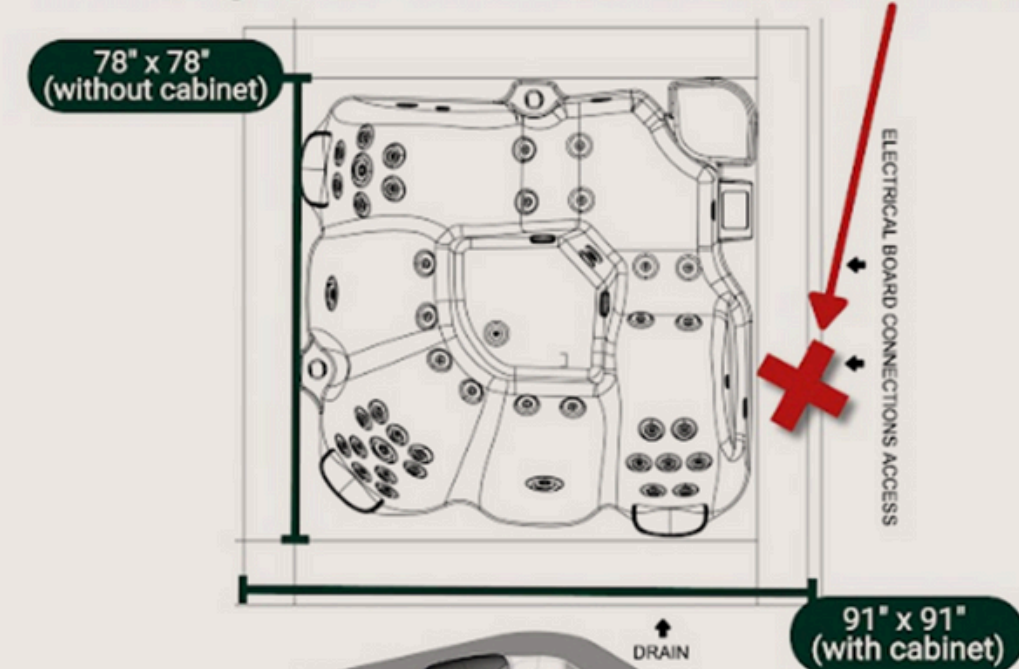
PRE INSTALLATION REQUIREMENTS

The Nova's electrical junction and control board are housed behind the service panel located within the first one-third of any given side. When the cabinet is installed, this corresponds to roughly the first 66 cm (26 in) of the 231 × 231 cm (91 × 91 in) footprint. To access:

- Remove the designated cabinet panel on the front-right corner (when facing the spa).
- Behind this panel you will find the GFCI-protected breaker, control board connections, and wiring harness.
- All wiring is factory-preassembled; field wiring requires only a dedicated 220 V, 16 A circuit terminated in the spa's junction box.

Keep at least 50 cm (24 in) of clear, unobstructed space in front of this panel for safe access and service.

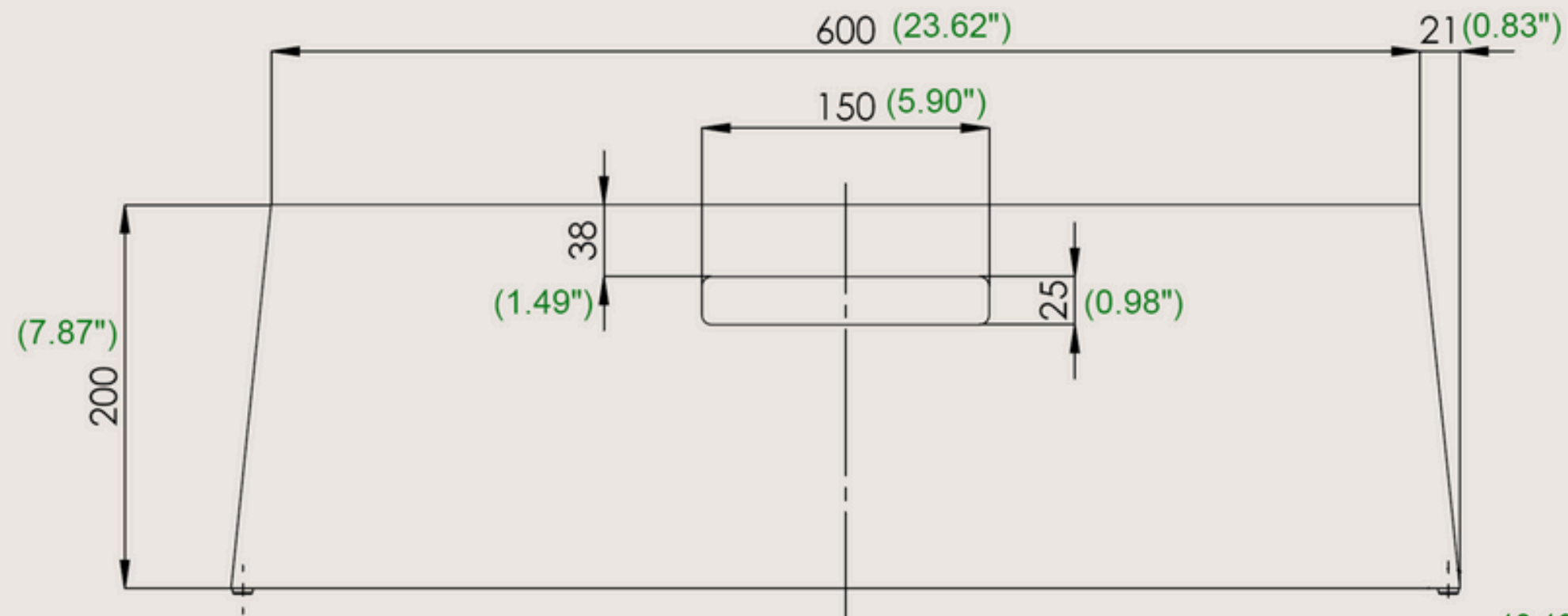
The wiring will be somewhere in the first 1/3 of the panel



The spa measures 91" x 91" with cabinet and 78" x 78" without the cabinet. (Note that there is a hollow space between the internal service panel & the cabinet panel.)



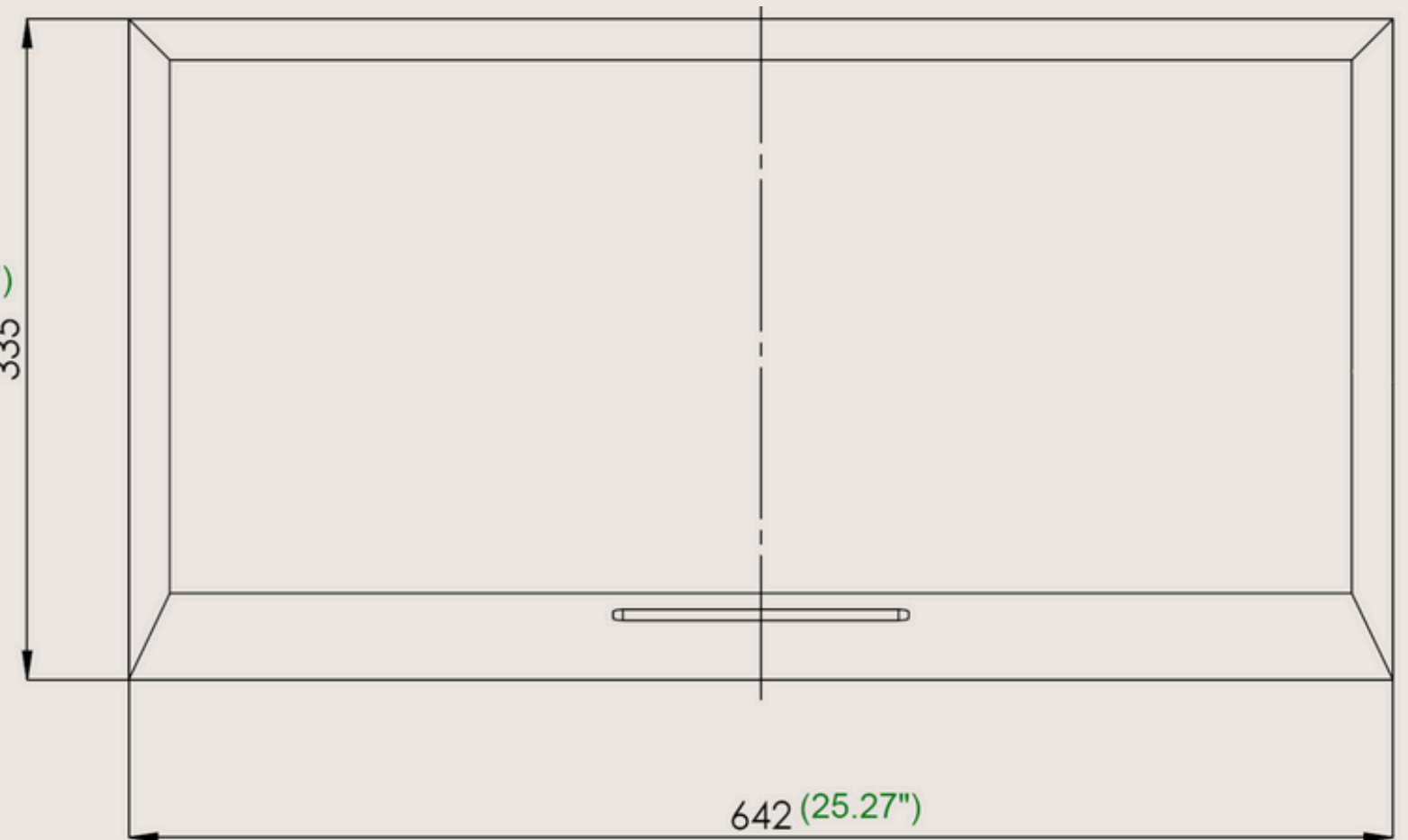
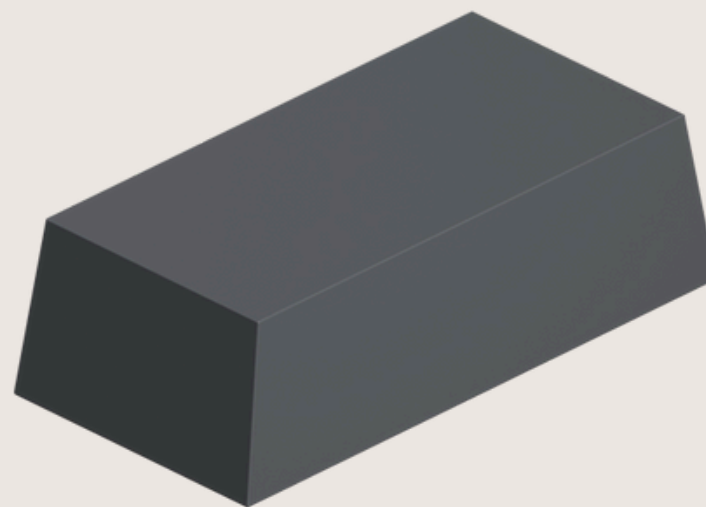
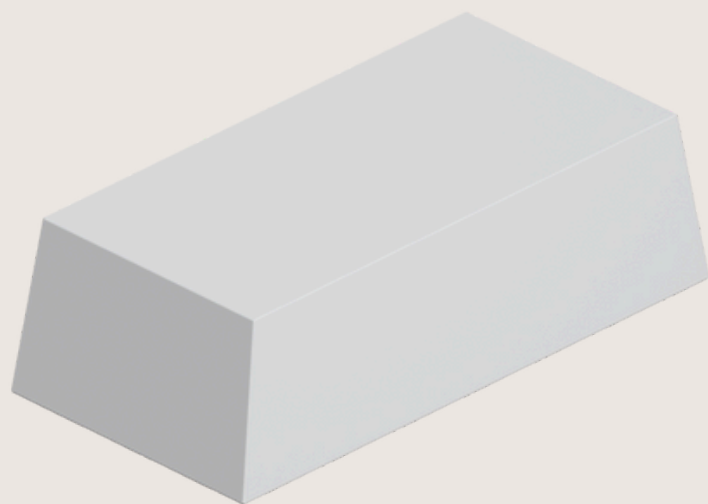
SPA STEPS



The step provides a stable and secure platform for easy entry and exit from the hot tub. Its durable construction ensures long-lasting performance and safe support. Designed with a simple, functional shape, it complements most hot tub styles.

13.19")

335



SPA COVER

Introducing the PRIME TEX COVER, a new generation of spacovers designed to elevate the elegance and functionality of your spa experience. Created with an eye for sophistication, these covers combine premium aesthetics with advanced material technology, making them the perfect complement for any exclusive or premium spa model.

The PRIME TEX COVER embodies a refined style while offering superior protection and durability, ensuring your spa maintains its pristine look over time. Experience the perfect balance of beauty and performance with our latest innovation, crafted to enhance the luxury and comfort of your relaxation space.

This premium fabric ensures that the cover not only looks sophisticated but also withstands the elements, making it ideal for both indoor and outdoor use. The carefully chosen material is designed to resist wear and tear, extending the lifespan of the cover while providing an elegant and inviting look that complements the spa's aesthetics.



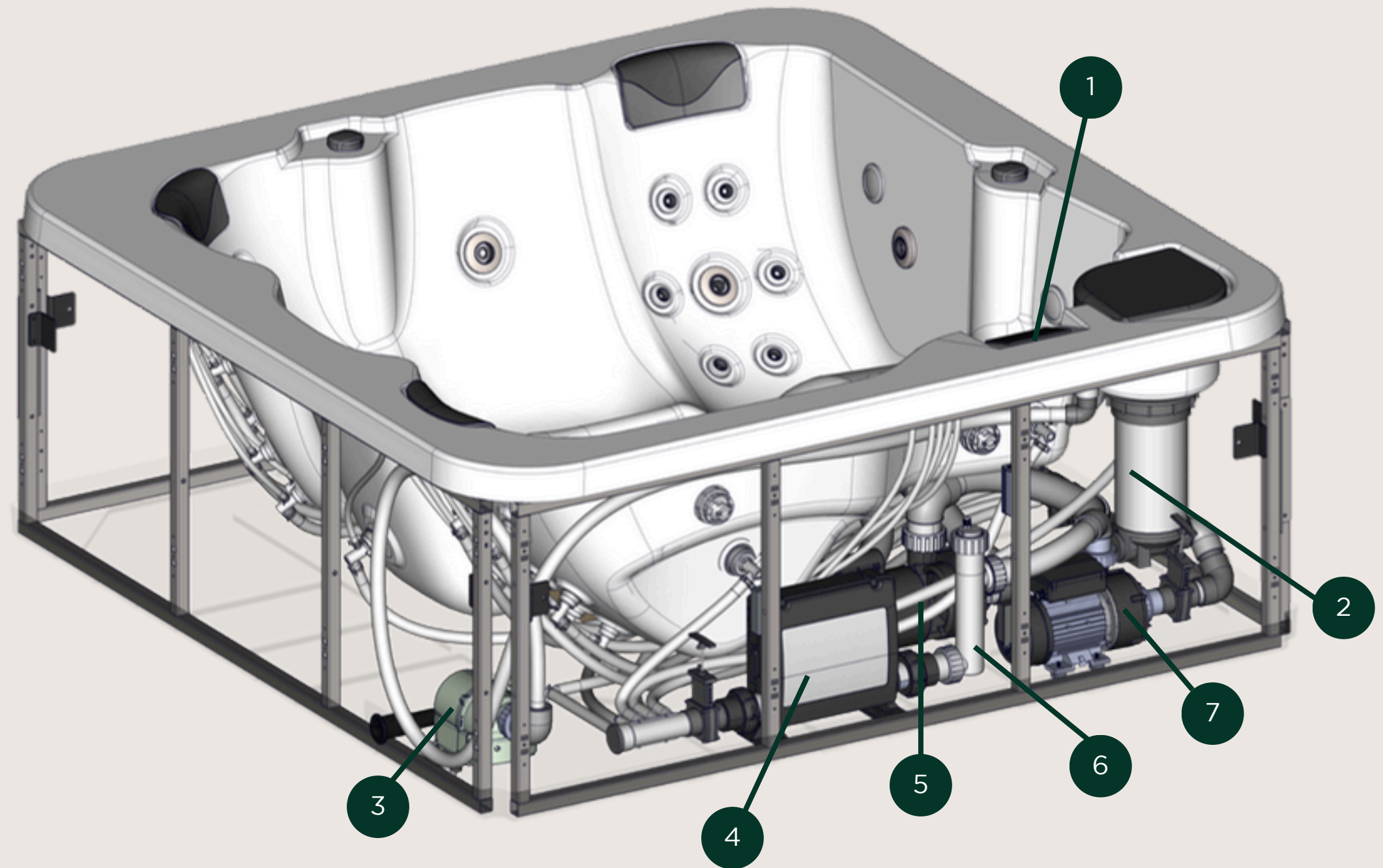


TECHNICAL SECTION



SPA INTERIOR DIAGRAM

- 1. Touch Panel
- 2. Filter cartridge
- 3. Circulation Pump
- 4. UV Light
- 5. Massage Pump
- 6. Main Board
- 7. Blower





SPARE PARTS & COMPONENTS

Control Components

- Ventury Controller

Control Panel

- SPA Touch 3 Control Panel

Light Components

- Spotlight LED Set CMP
- LED Slave Light
- 4 LEDs Lights (points)
- LEDs Transformer — 5 V DC
- LEDs Driver

Heater & Accessories

- Heater Box — BP200G1
- Temperature Probes (×2) — GS I GL
- Heater — 4 kW, 825 N7
- Digital Panel — BP200G1
- Expander Board — BP200G1

Pumps

- Massage Pump — 60 Hz, 3 HP
- Filtration Pump — 0.35 HP, 60 Hz
- Balboa Blower Pump — 1 HP, 60 Hz

Pillows & Covers

- Small Headrest (×3) — grey
- Skimfilter Cover (×1) — grey

Massage Components

- Jet Body Set 2"
- Frontal Jet 2" SS Directional
- Frontal Jet 2" SS Roto
- Jet Body Set 3"
- Frontal Jet 3" SS Directional
- Frontal Jet 3" SS Twin Roto
- Jet Body Set 4" Dark
- Frontal Jet 4" SS Directional
- White Stainless-Steel Air Nozzle

Filtration

- Skimfilter RD — low profile
- Filter Cartridge — Skimfilter RD

Audio (Option 4.1)

- Audio Receiver — Bluetooth BBA-3
- Connector Cable
- Subwoofer
- Speaker

Disinfection

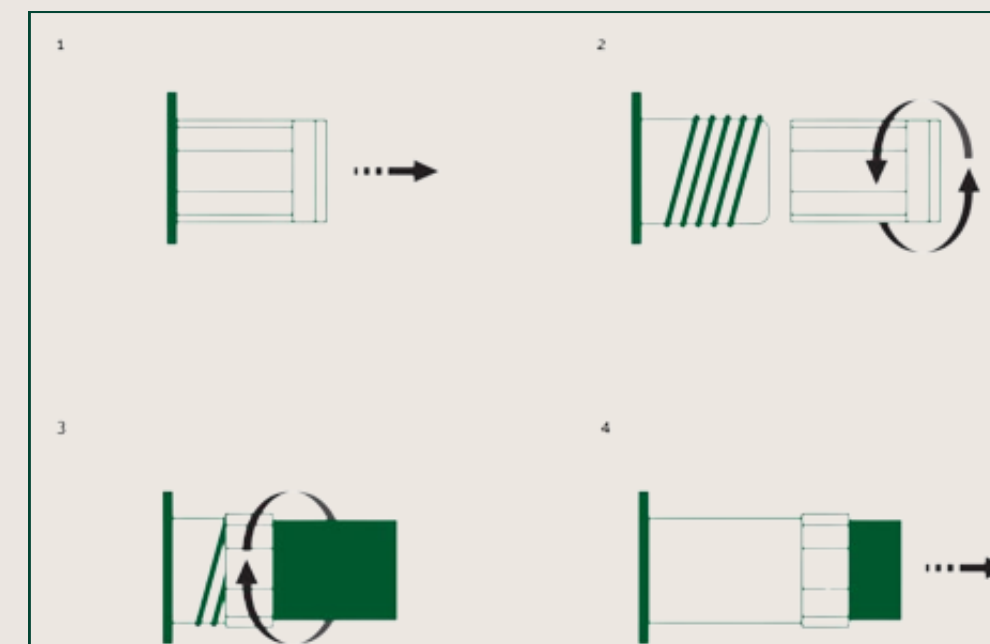
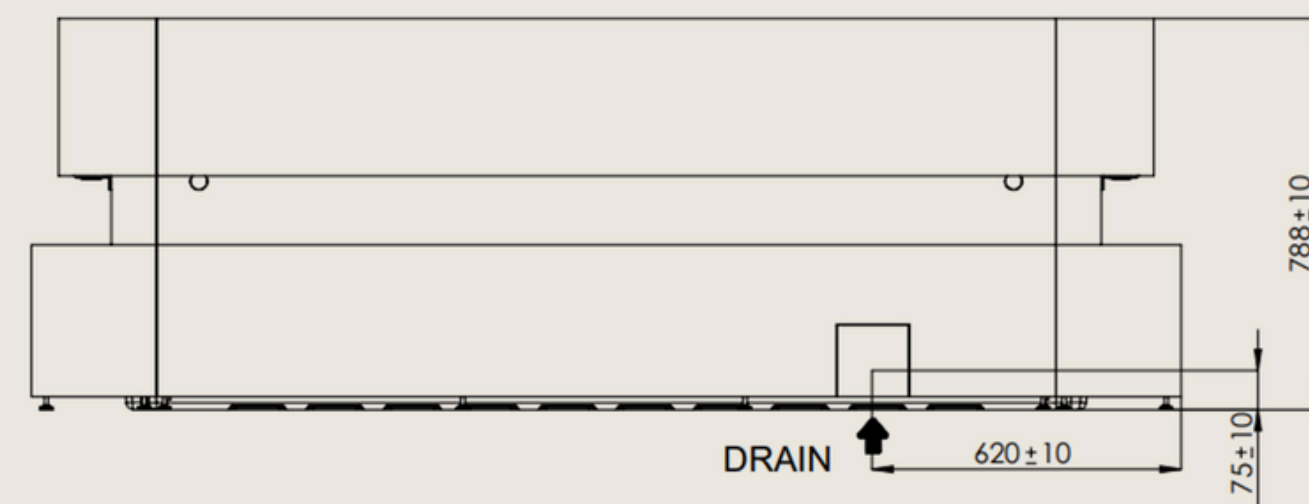
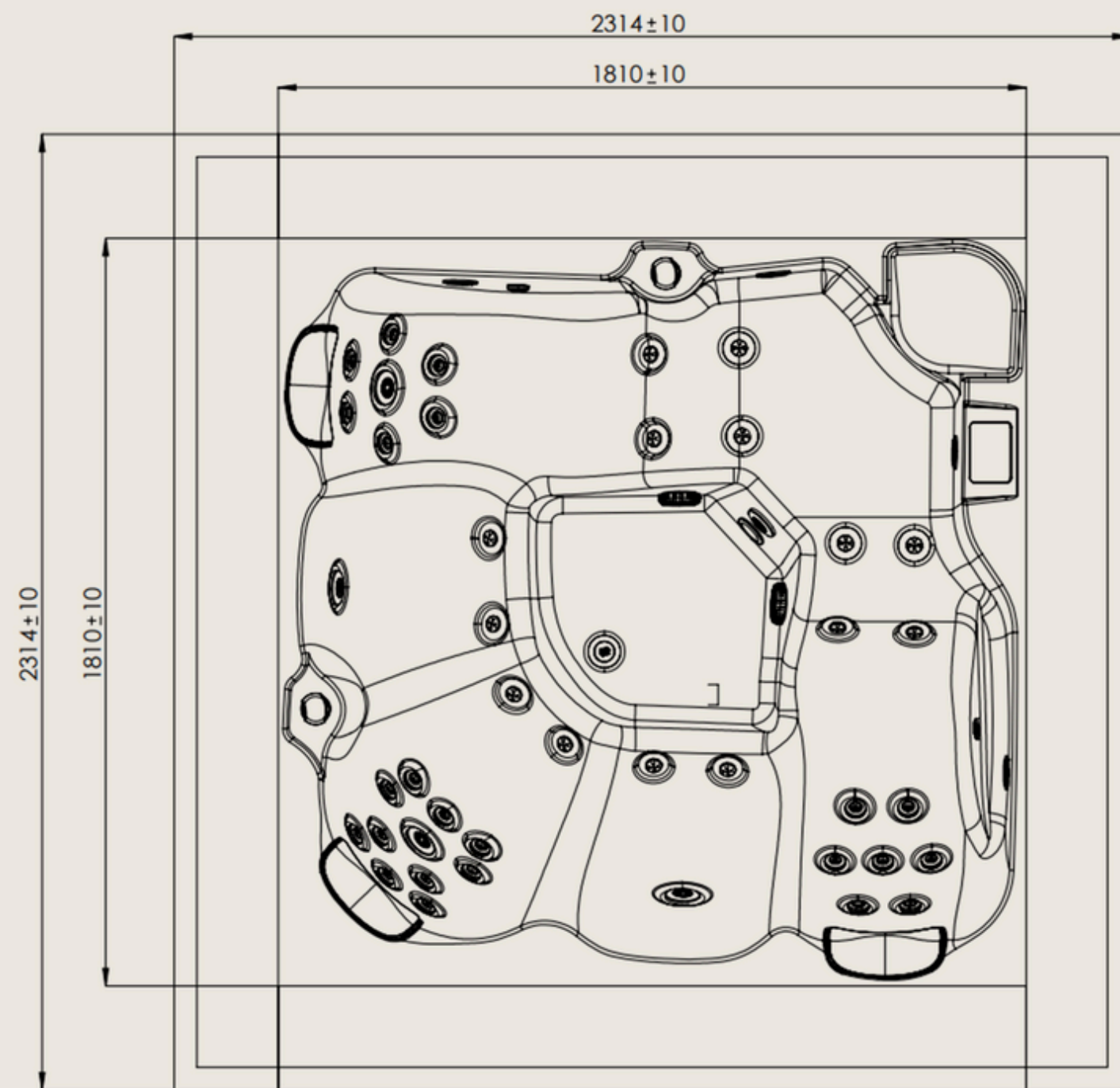
- UV Disinfection System — 21 W

Other Components

- Drain Fill Valve (black)
- Cable — 4 outputs + LEDs
- Grey Drain Set
- Grey Spa Drain — 3-3/4"



TECHNICAL DRAWINGS





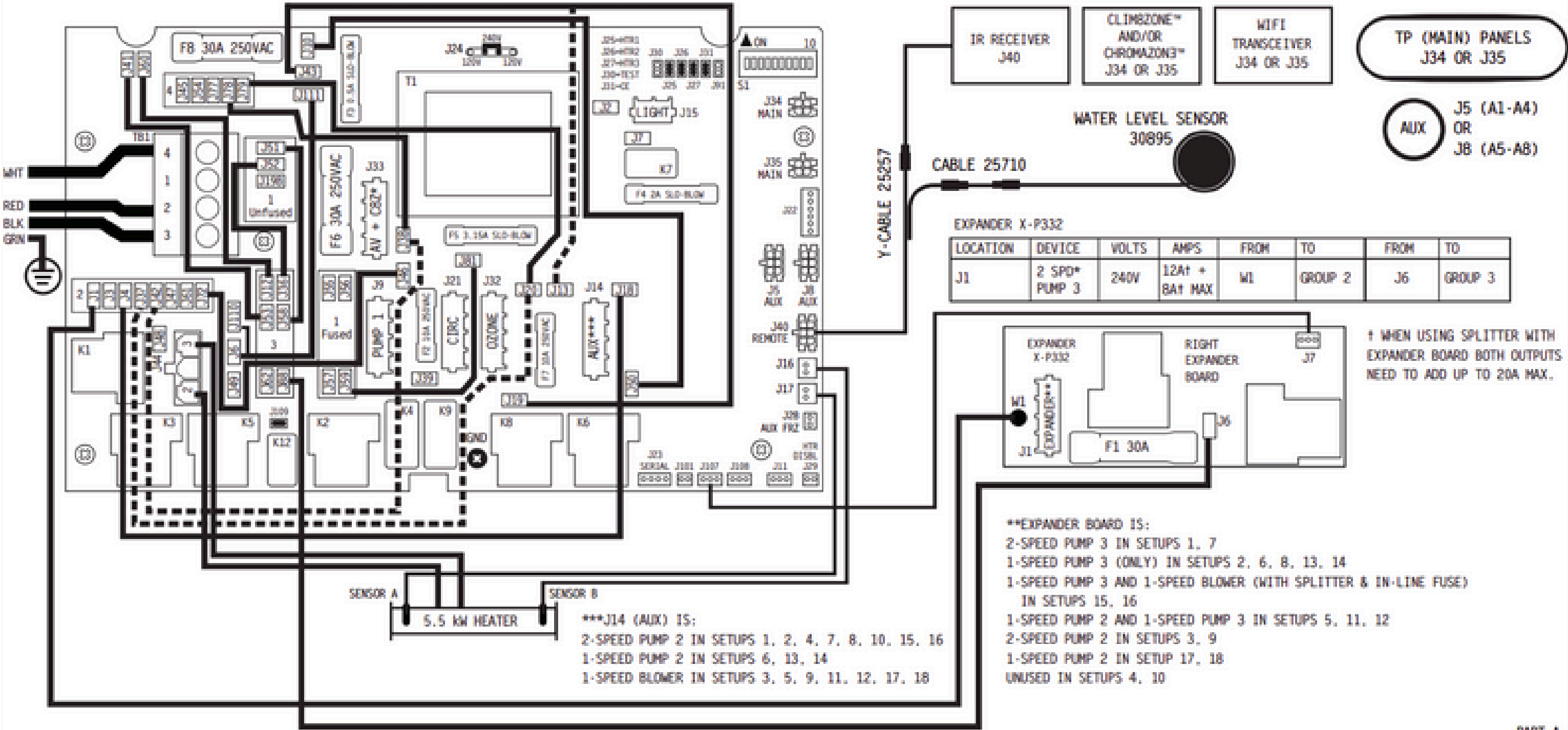
BALBOA
water group

* OPTIONAL SPLITTER PN 22934 MAY BE REQUIRED IF TWO DIFFERENT THINGS NEED TO BE CONNECTED AT J33

J43 TO J13 (BLOWER ON J14) IN SETUPS 3, 5, 9, 11, 12, 17, 18

BP20G1WL - PN 59593

06-22-23



IR RECEIVER
J40

CLIMBZONE™
AND/OR
CHROMAZONE™
J34 OR J35

WIFI
TRANSCIVER
J34 OR J35

TP (MAIN) PANELS
J34 OR J35

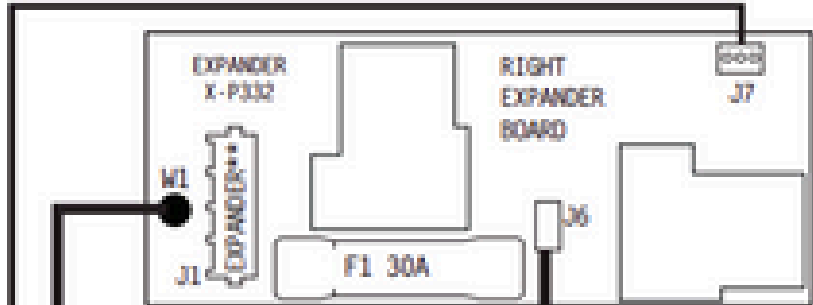
AUX J5 (A1-A4)
OR
J8 (A5-A8)

WATER LEVEL SENSOR
30895

CABLE 25710

EXPANDER X-P332

LOCATION	DEVICE	VOLTS	AMPS	FROM	TO	FROM	TO
J1	2 SPD* PUMP 3	240V	12A1 + 8A1 MAX	W1	GROUP 2	J6	GROUP 3



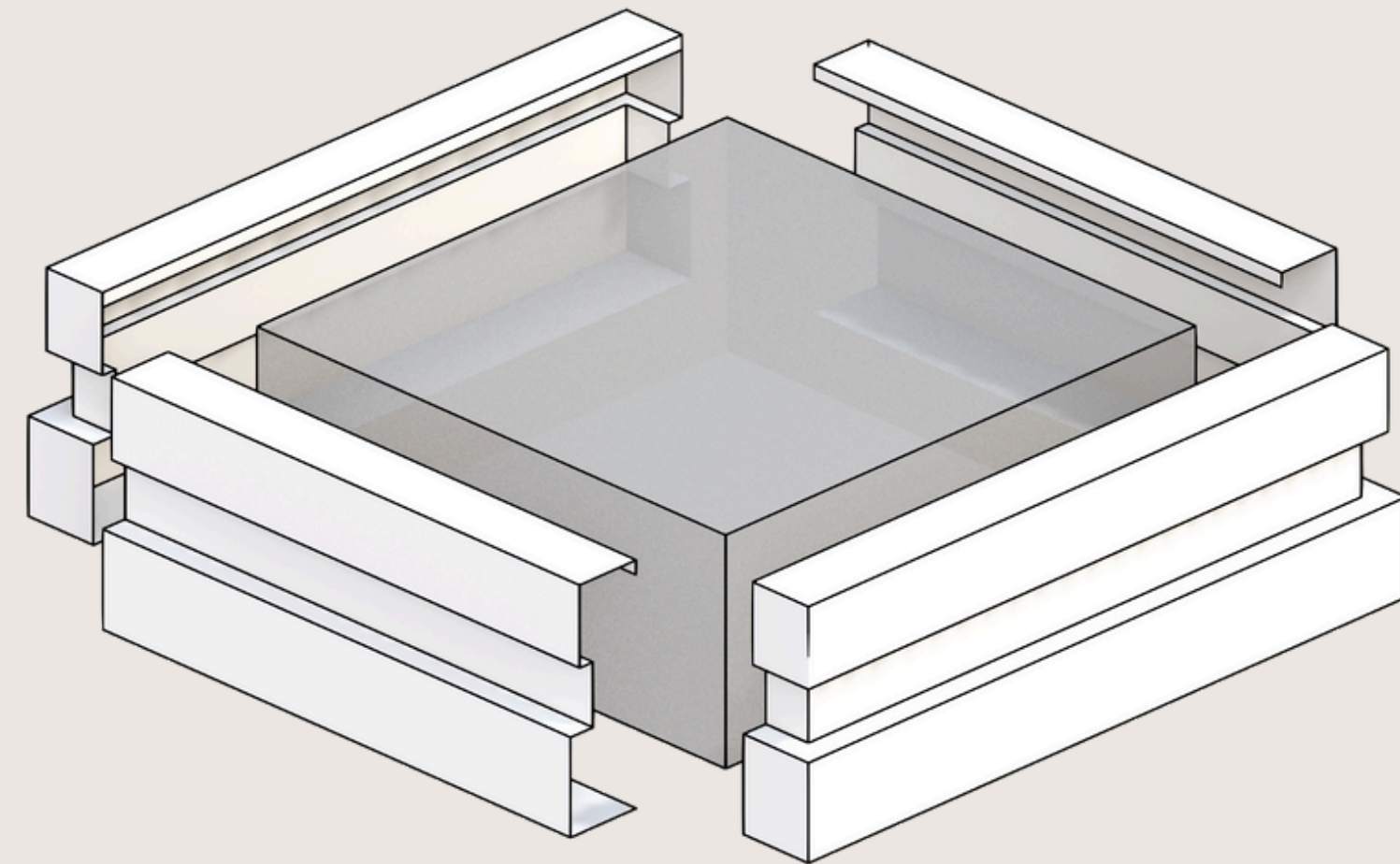
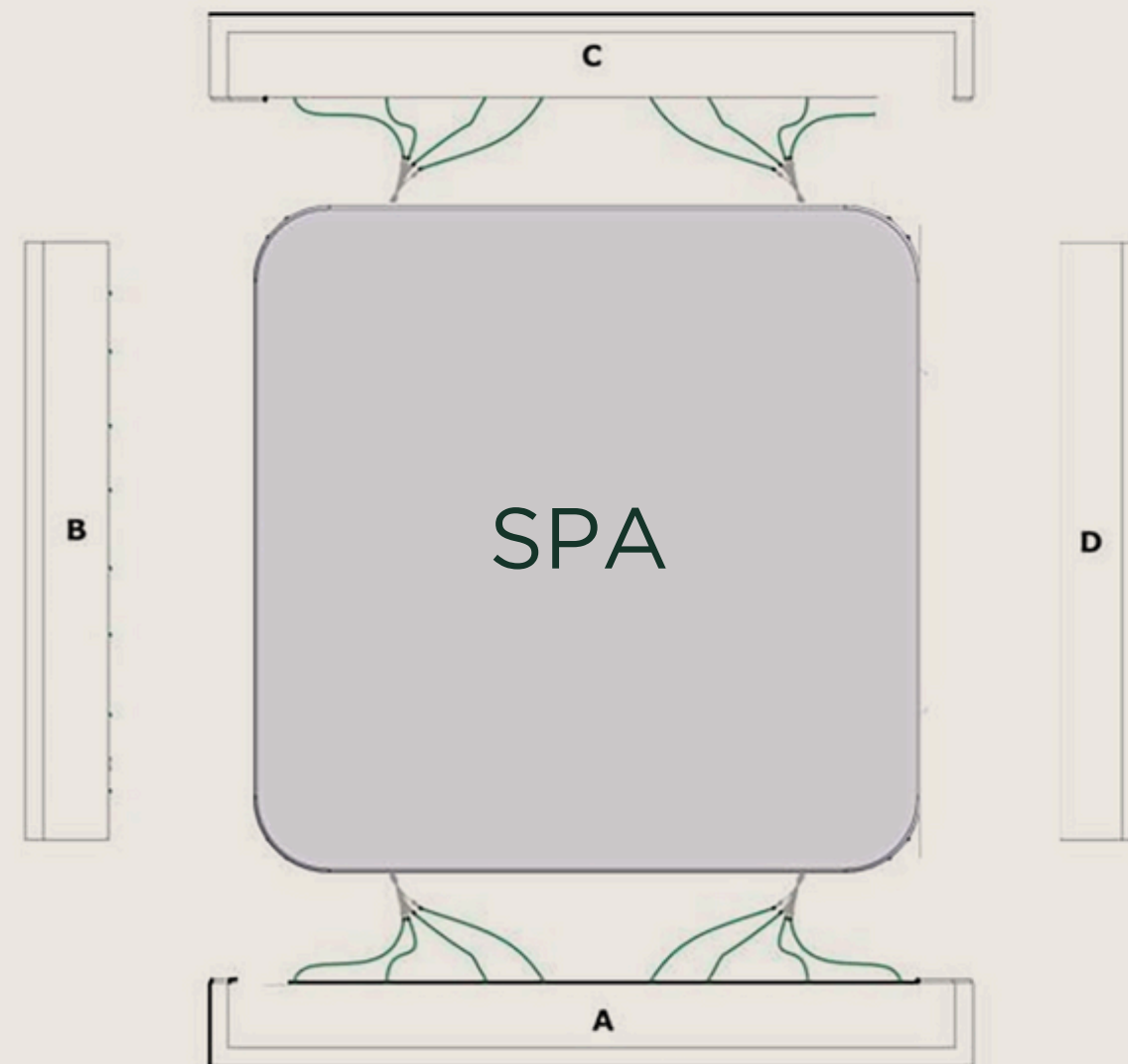
* WHEN USING SPLITTER WITH
EXPANDER BOARD BOTH OUTPUTS
NEED TO ADD UP TO 20A MAX.

**EXPANDER BOARD IS:
2-SPEED PUMP 3 IN SETUPS 1, 7
1-SPEED PUMP 3 (ONLY) IN SETUPS 2, 6, 8, 13, 14
1-SPEED PUMP 3 AND 1-SPEED BLOWER (WITH SPLITTER & IN-LINE FUSE)
IN SETUPS 15, 16
1-SPEED PUMP 2 AND 1-SPEED PUMP 3 IN SETUPS 5, 11, 12
2-SPEED PUMP 2 IN SETUPS 3, 9
1-SPEED PUMP 2 IN SETUP 17, 18
UNUSED IN SETUPS 4, 10

***J14 (AUX) IS:
2-SPEED PUMP 2 IN SETUPS 1, 2, 4, 7, 8, 10, 15, 16
1-SPEED PUMP 2 IN SETUPS 6, 13, 14
1-SPEED BLOWER IN SETUPS 3, 5, 9, 11, 12, 17, 18

SENSOR A
5.5 kW HEATER
SENSOR B

PANEL ASSEMBLY



Check the following video for more information

https://www.youtube.com/watch?v=DxHCxV0yGog&ab_channel=CasaBlui



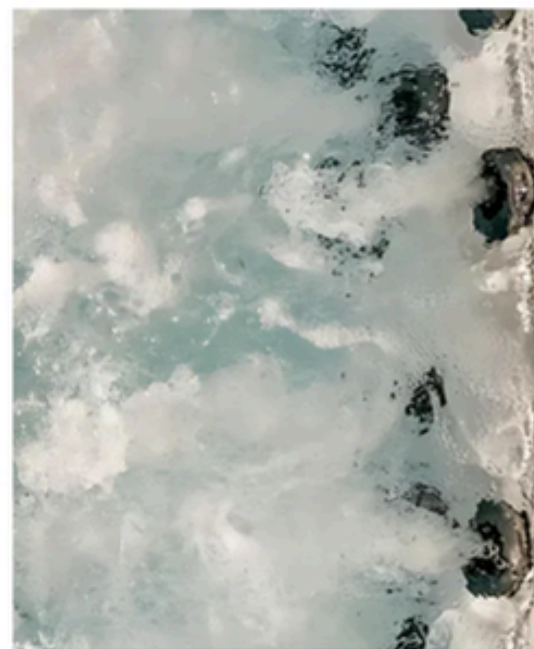
WARRANTIES



15 Years for Frame



10 Years for Acrylic



2 Years for Components






CONTACT & SUPPORT

Luis Acosta - Operations & Logistics department Head

 (305) 701-4085


 operations@casablui.com

Sebastian Infante - After Sales Department Head

 (310) 304-5872

 support@casablui.com

Marce Groenewald - Sales Department Head

 (305) 701-4029

 sales@casablui.com



CASA BLUI

Casa Blui
Operational Headquarters:
Miami, Florida, USA
Phone (+1) 305 701 4029
sales@casablui.com / www.casablui.com