

CASA BIUI

NARA



COMERCIAL SECTION



GENERAL INFORMATION

CASA BLUI – NARA

Capacity: 6 people

Seating positions: 6 positions

Dimensions: (89.8 × 86.6 × 32.3)"

The Nara is a premium rectangular-format hot tub designed for a balanced mix of relaxation and social interaction. With six ergonomically positioned seats it ensures versatile comfort for groups or families.

Equipped with 48 jets made of durable stainless steel, the Nara delivers a comprehensive hydrotherapy experience that combines power and precision. Aromatherapy integration and UV water treatment technology further enhance its health and wellness features, while the digital control panel offers intuitive operation.

Built with a galvanized steel frame for exceptional durability, the Nara's modern design integrates seamlessly with both indoor and outdoor settings, bringing spa-quality relaxation into your home.



KEY FEATURES & BENEFITS

Ergonomic Seating Configuration

One full-body lounge plus five upright seats with multiple hydrotherapy settings for the best experience.

Massage System

48 stainless-steel hydro-jets and 14 air nozzles deliver targeted relief from neck to calves.

Smart Control & Connectivity

Intuitive touch-panel operation with optional Wi-Fi Spa Control for remote scheduling and diagnostics.

Advanced Water Care

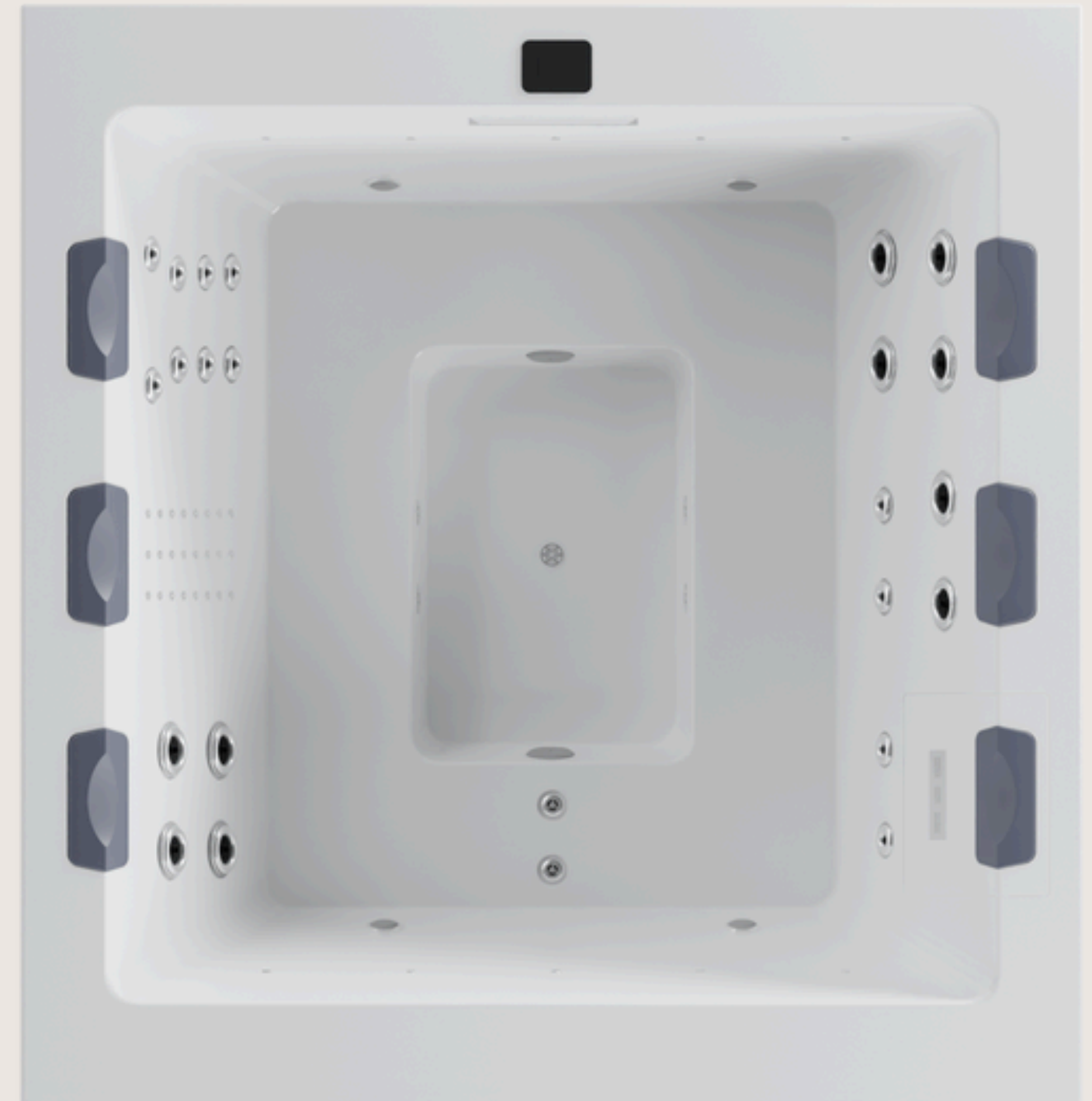
Standard UV treatment and optional ozonator keep water crystal-clear with minimal chemical use.

Thermal Efficiency

Special Insulation System and eco-efficient cabinet reduce heat loss by up to 25%, lowering operating costs.

Customizable Ambience

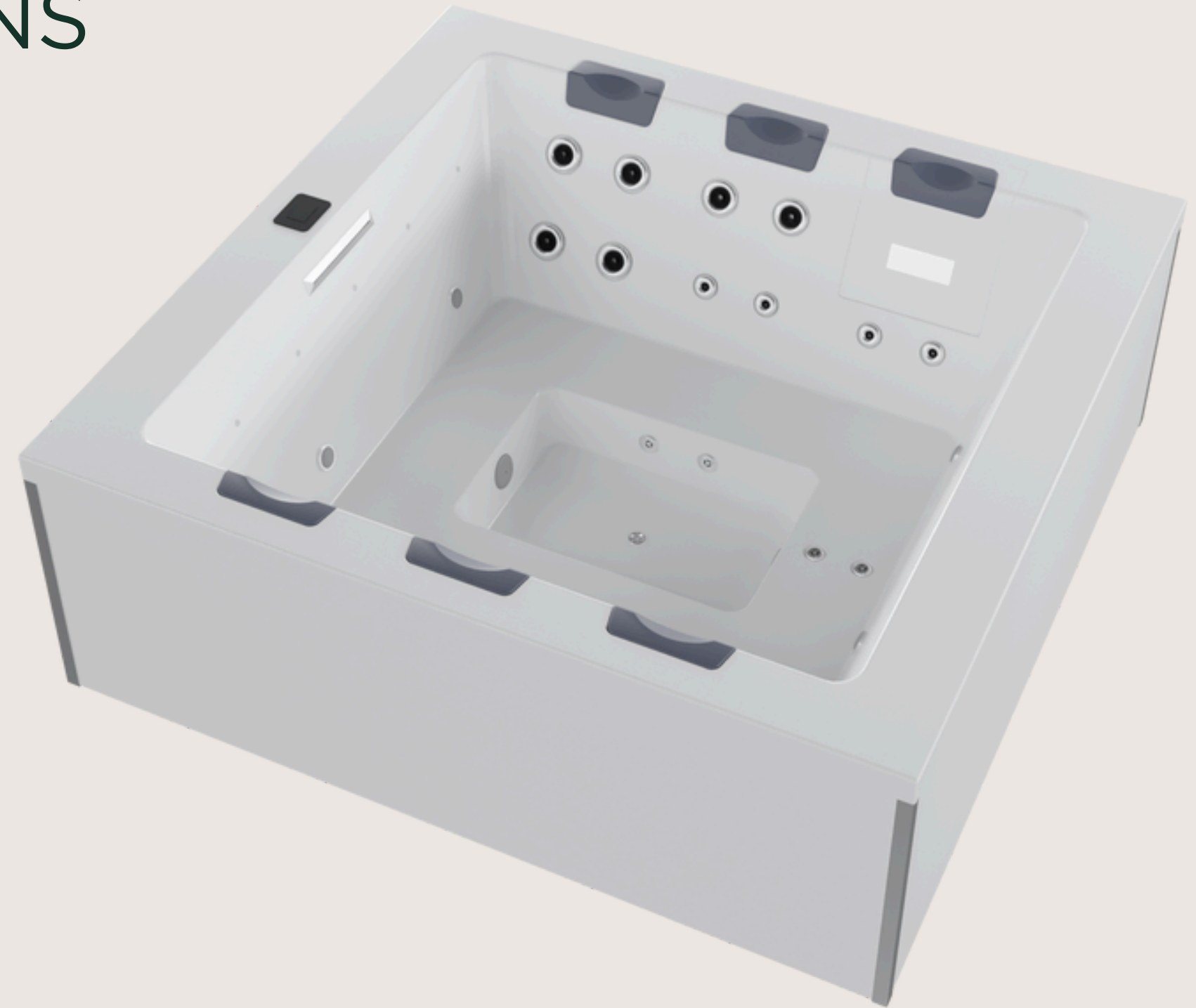
Colour Sense LED lighting package and optional Surround Bluetooth Audio let users personalize mood and sound.





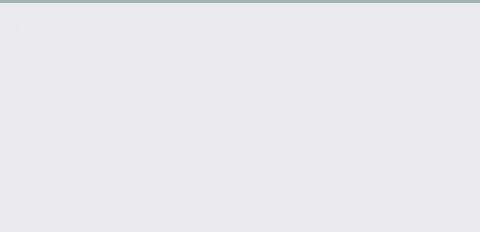
TECHNICAL SPECIFICATIONS

Dimensions:	89.8" × 86.6" × 32.3"
Water Capacity:	1350 L
Dry Weight:	771 lbs
Filled Weight:	3747 lbs
Power Requirement:	50A - 220V/60Hz
Water Massage Pump:	3 HP
Recirculation Pump:	0.25 HP
Water Heater:	3 000 W
Filter Type:	Cartridge
Interior lights:	2 pcs



FINISHES & OPTIONS

Exterior Aluminum Cabinet



White



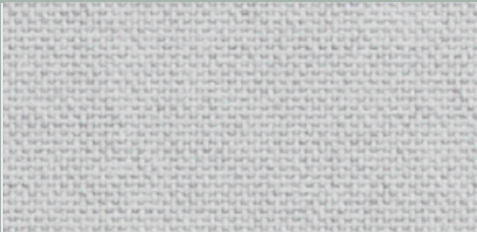
Grey



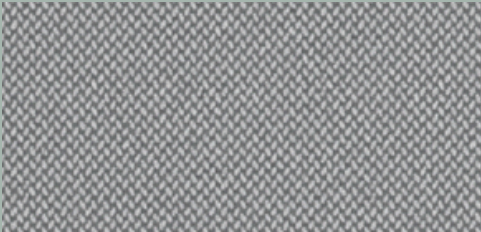
White



Grey Storm

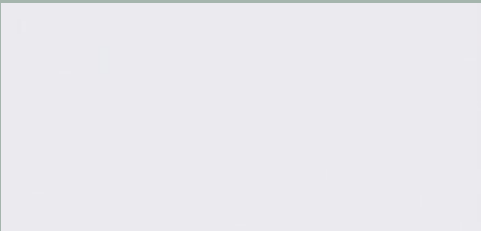


White



Grey Storm

Interior Cabinet



White



PRE INSTALLATION REQUIREMENTS

Delivery access & clearance

Ensure there's a clear path from the street/front door to the final spa location with at least ~15" extra clearance, and confirm if any special equipment (e.g., crane/forklift) is needed. This prevents last-minute logistics failures and damage during handling.

Structural foundation

The site must be level, structurally sound, and preferably a reinforced concrete pad ≥ 4 " thick (with rebar/wire mesh), proper slope for runoff ($\leq \frac{1}{2}$ " over 8 ft), and free of hollows/bumps. This protects the shell and plumbing from torsion and uneven loading over time.

Service clearances

Maintain ~20" around all four sides; for built-ins, include removable panels for full service access. Adequate working room is essential for future maintenance, leak checks, and component replacement without demolition.

Electrical supply & protection

Provide a dedicated 220–240 V, 60 Hz single-phase circuit with a 50–60 A breaker per spec, copper conductors of the correct gauge, and clear access to the main breaker or GFCI disconnect. Proper power sizing and protection are critical for heater/pump performance and user safety.

Drainage & ventilation (built-in)

Onstall a 1.5" drainage hose for controlled emptying and at least two ~5.9" diameter vents to extract heat/moisture from the equipment bay. This prevents moisture accumulation, protects electronics, and aids thermal performance.



INSTALLATION REQUIREMENTS

Electrical safety & configuration

Verify a dedicated 50–60 A breaker, correct cable gauge for run length, secure F+N+T terminations, proper earth/ground, 230 V $\pm 10\%$ at the conduit, correct control-box DIP settings, and Group-2 output at 230 V. This prevents nuisance trips, under-voltage heating issues, and safety hazards.

Load & serviceability of the installation

Confirm the spa is level on a surface designed to bear full operating weight, maintain ~20" service clearance on all sides, and provide drainage for splash/leak water. This protects the shell/plumbing from stress and ensures future maintenance access.

Hydraulic integrity

Open and lock all gate valves and inspect thoroughly for leaks under/inside the cabinet. Catching leaks now avoids damage to electrics, framing, and finishes.

Water chemistry baseline

Fill from the top (or through the filter), set pH to 7.2–7.6, and ensure disinfectant is in range (Cl: 0.5–1.5 ppm; Br: 2.2–3.3 ppm). Proper start-up chemistry protects surfaces, seals, and bathers, and stabilizes commissioning.

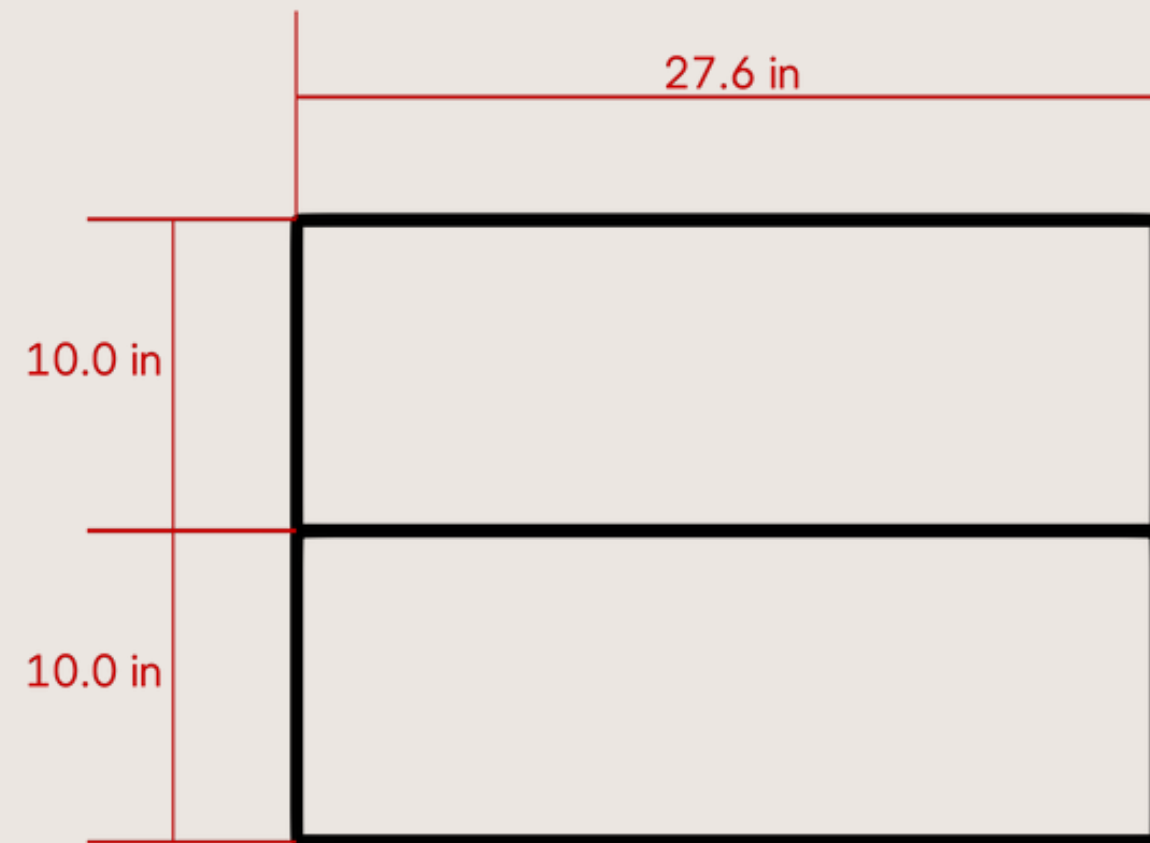
Functional verification under load

Check jets (all open, strong flow), venturi valves, control panel (no errors), circulation pump, jet pumps, blower, lights, and UV/ozone system. Confirm total draw (all loads on) does not exceed 50 A. This proves the system performs as specified before handover.

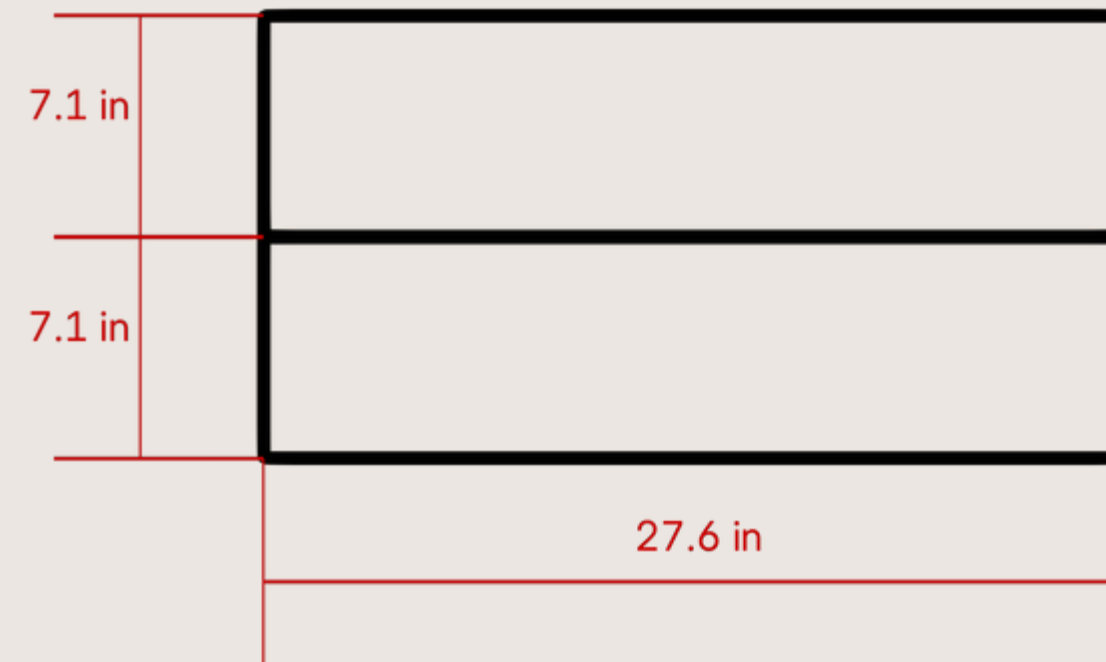


SPA STEPS

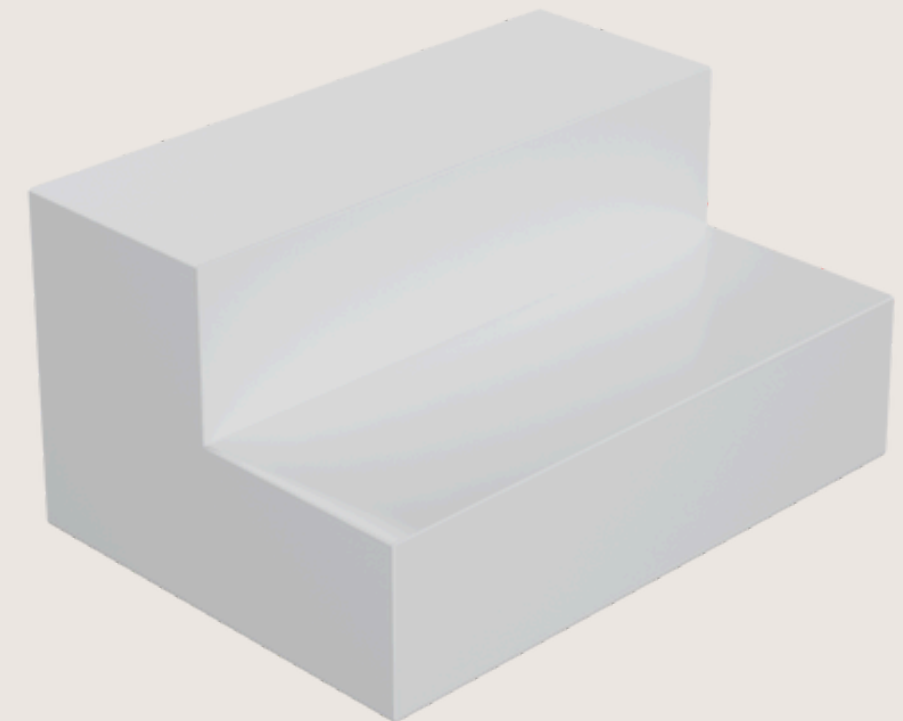
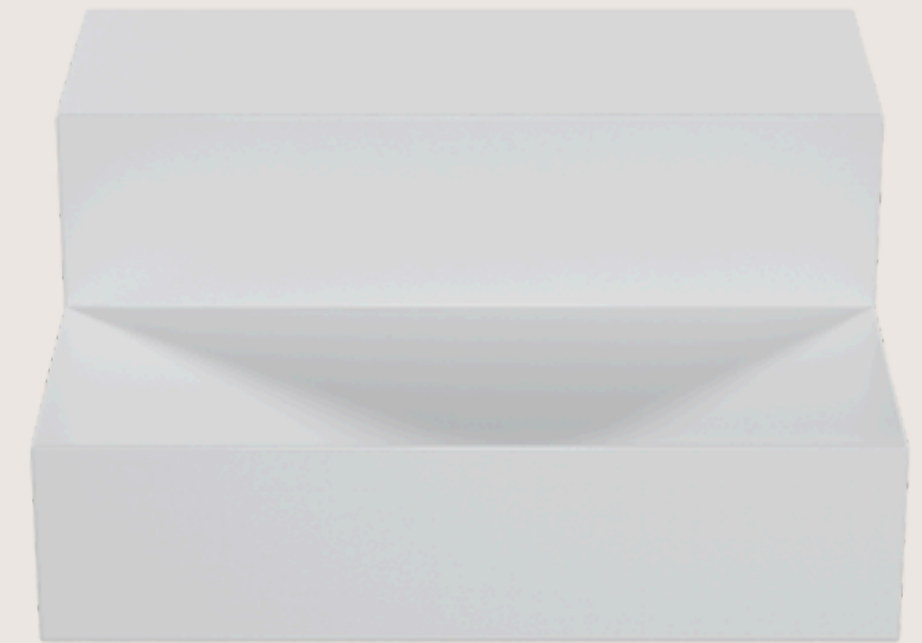
The step provides a stable and secure platform for easy entry and exit from the hot tub. Its durable construction ensures long-lasting performance and safe support. Designed with a simple, functional shape, it complements most hot tub styles.



TOP VIEW



FRONT VIEW





SPA COVER

Introducing a new generation of spa covers designed to elevate the elegance and functionality of your spa experience. Created with an eye for sophistication, these covers combine premium aesthetics with advanced material technology, making them the perfect complement for any exclusive or premium spa model.

The spa cover embodies a refined style while offering superior protection and durability, ensuring your spa maintains its pristine look over time. Experience the perfect balance of beauty and performance with our latest innovation, crafted to enhance the luxury and comfort of your relaxation space.

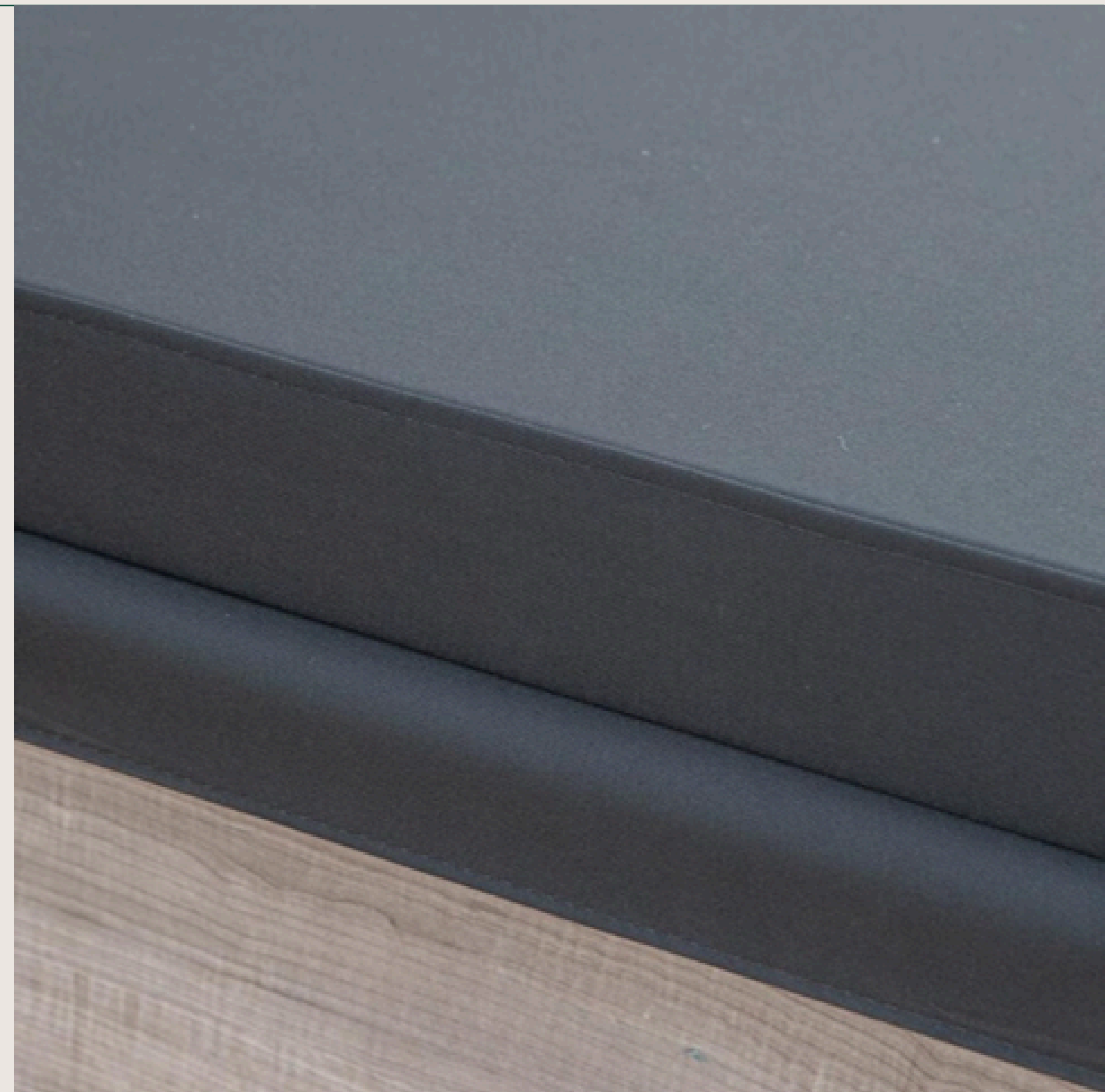




TEXTILE MATERIAL

The textile has been selected not only for its quality and strength, but also for its softness to the touch, which adds a feeling of luxury and comfort. In addition, the textile material enhances the UV protection against solar radiation, maintaining its appearance and preventing fading over time.

This premium fabric ensures that the cover not only looks sophisticated but also withstands the elements, making it ideal for both indoor and outdoor use. The carefully chosen material is designed to resist wear and tear, extending the lifespan of the cover while providing an elegant and inviting look that complements the spa's aesthetics.



SAFETY LOCKING

The locking system designed for solid surfaces on the spa cover provides enhanced safety and stability, ensuring that the cover stays securely in place even in adverse weather conditions.

This specialized mechanism is tailored to fit perfectly with solid surface materials, creating a firm yet easy-to-use locking solution. It not only offers reliable protection against accidental displacement but also prevents unwanted access, adding an extra layer of security.

The result is a seamless and robust design that combines functionality with elegance, giving spa owners peace of mind and a sleek finish that blends effortlessly with the overall style.





TECHNICAL SECTION



SPARE PARTS & COMPONENTS

Control Components

- Ventury Controller

Control Panel

- SPA Touch 3 Control Panel

Light Components

- 2 LEDs Lights
- LEDs Transformer — 5 V DC
- LEDs Driver

Heater & Accessories

- Heater Box — BP200G1
- Temperature Probes (×2) — GS I GL
- Heater — 3 kW, 825 N7
- Digital Panel — BP200G1

Pumps

- Massage Pump — 60 Hz, 3 HP
- Filtration Pump — 0.25 HP, 60 Hz
- Balboa Blower Pump — 1 HP, 60 Hz

Pillows & Covers

- Headrest (×6)
- Skimfilter Cover (×1)

Massage Components

- Jet Body Set 2"
- Stainless Steel Micro Jets

Filtration

- Filter Cartridge

Disinfection

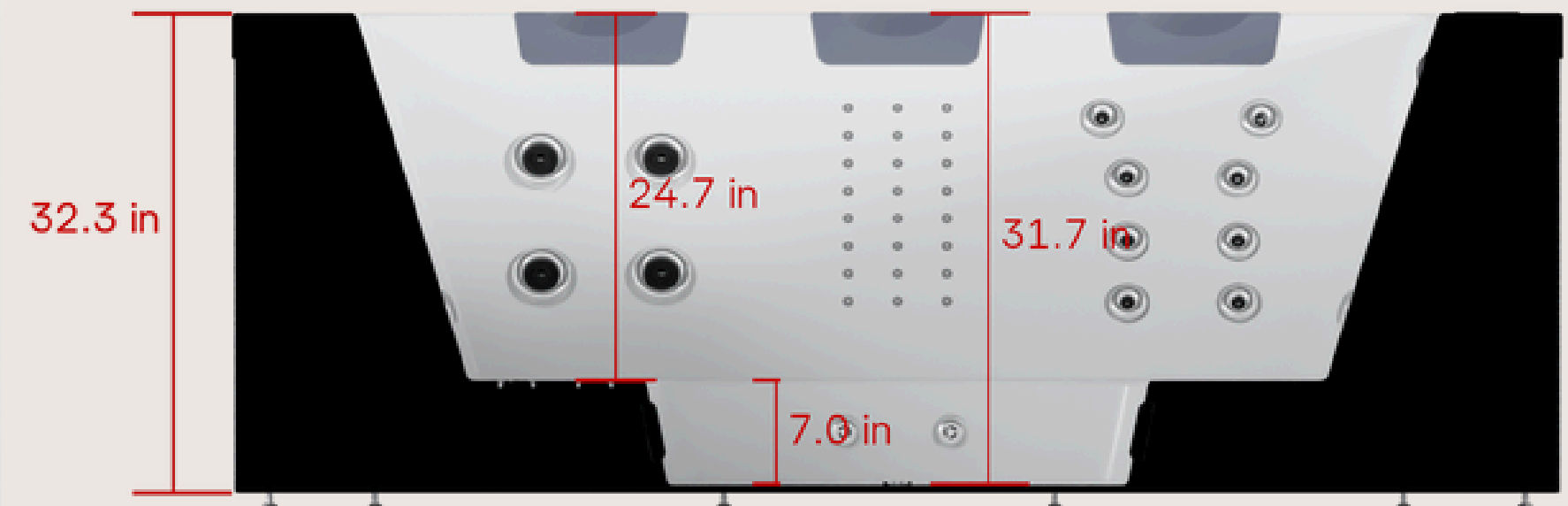
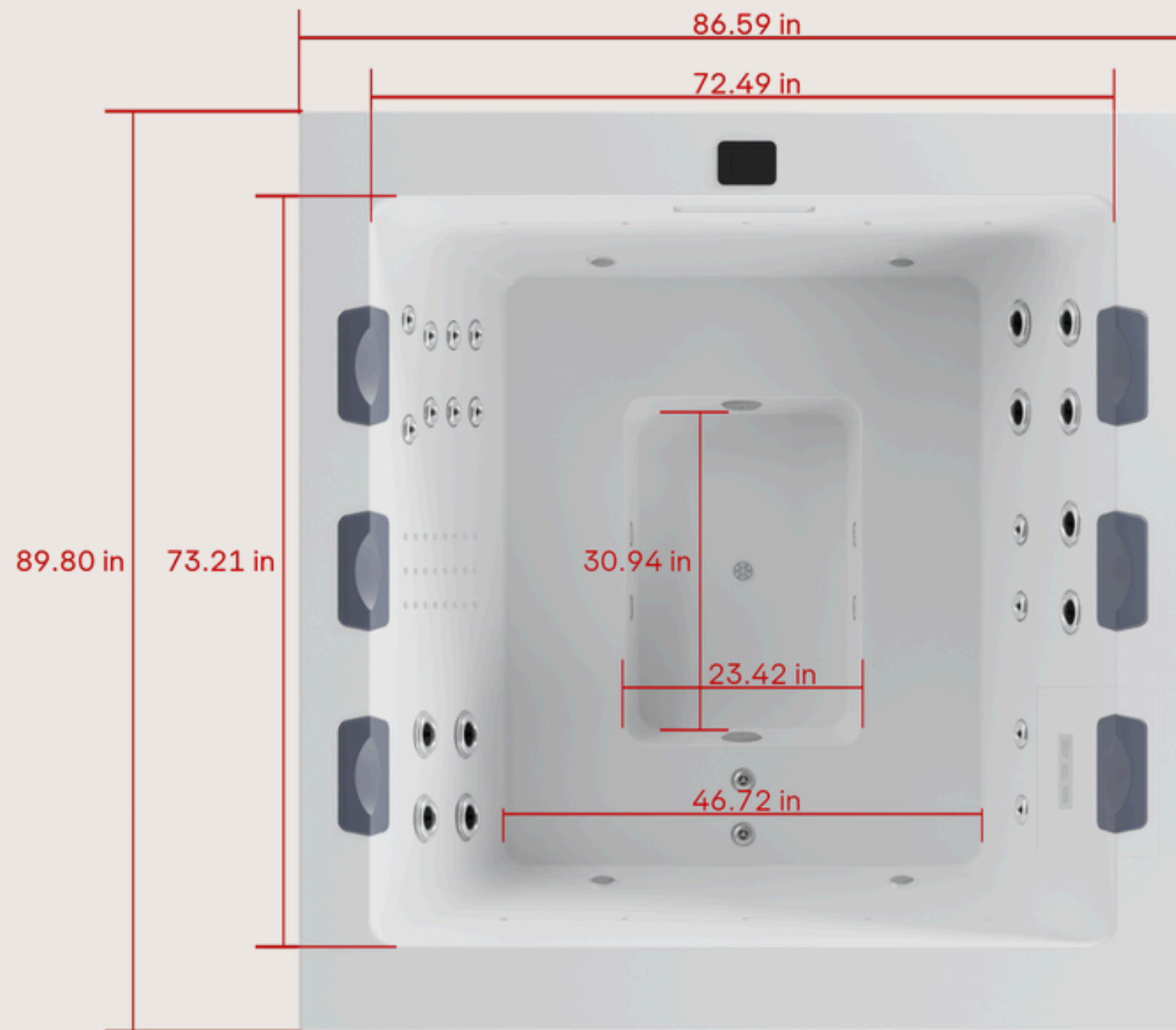
- UV Disinfection System

Other Components

- Drain Fill Valve (black)
- Cable — 4 outputs + LEDs



DIMENSIONS



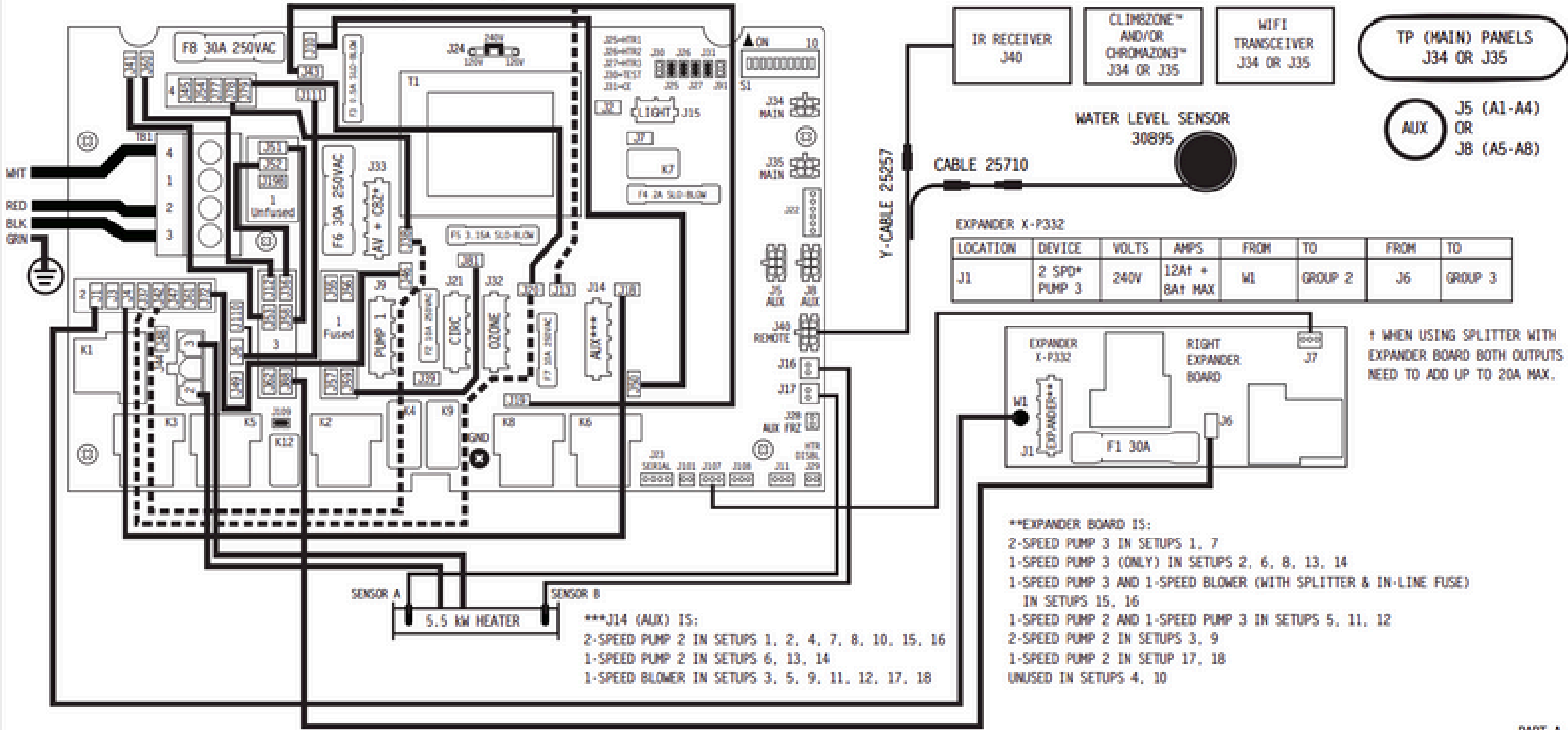


* OPTIONAL SPLITTER PN 22934 MAY BE REQUIRED IF TWO DIFFERENT THINGS NEED TO BE CONNECTED AT J33

J43 TO J13 (BLOWER ON J14) IN SETUPS 3, 5, 9, 11, 12, 17, 18

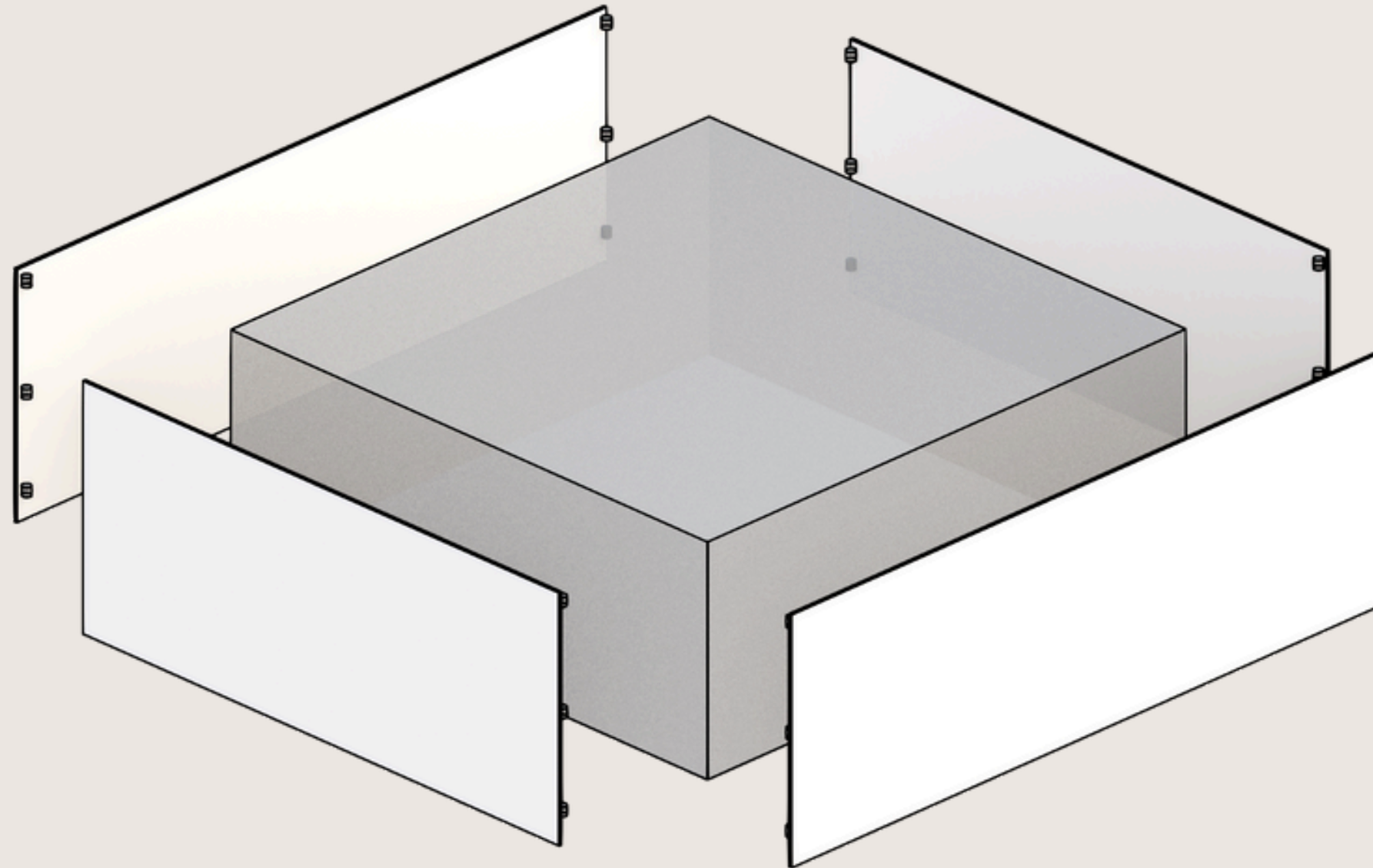
BP20G1WL - PN 59593

06-22-23





PANEL ASSEMBLY



Check the following video for more information

(VIDEO LINK)



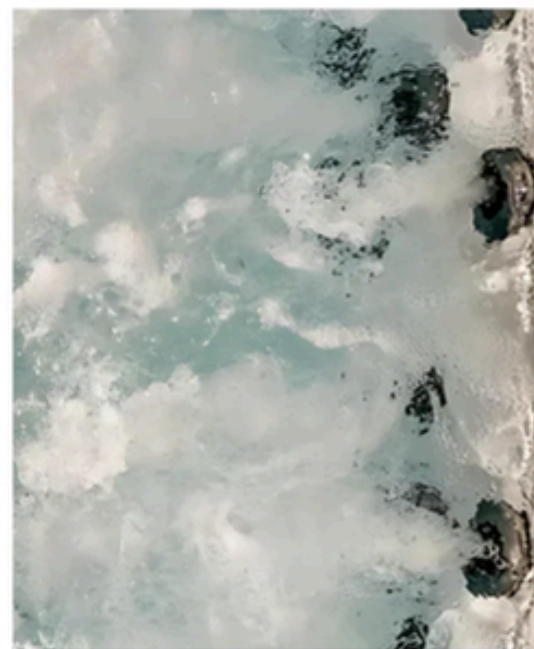
WARRANTIES



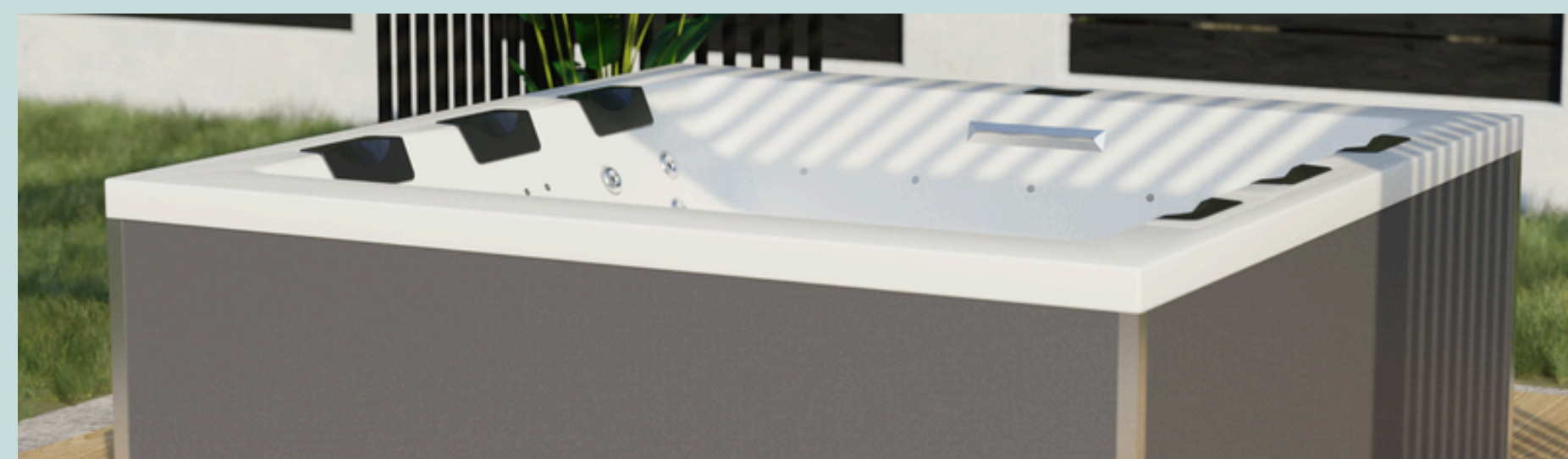
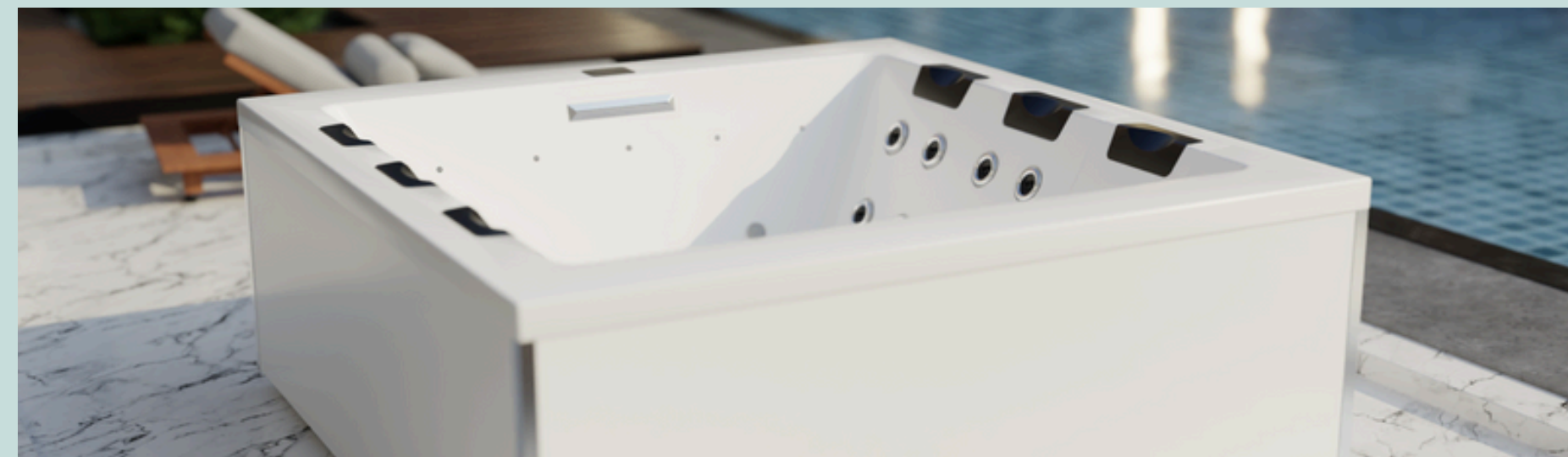
15 Years for Frame



10 Years for Acrylic



2 Years for Components






CONTACT & SUPPORT

Luis Acosta - Operations & Logistics department Head

 (305) 701-4085

 operations@casablui.com

Sebastian Infante - After Sales Deparment Head

 (310) 304-5872

 support@casablui.com

Marce Groenewald - Sales Deparment Head

 (305) 701-4029

 sales@casablui.com



CASA BLUI

Casa Blui
Operational Headquarters:
Miami, Florida, USA
Phone (+1) 305 701 4029
sales@casablui.com / www.casablui.com