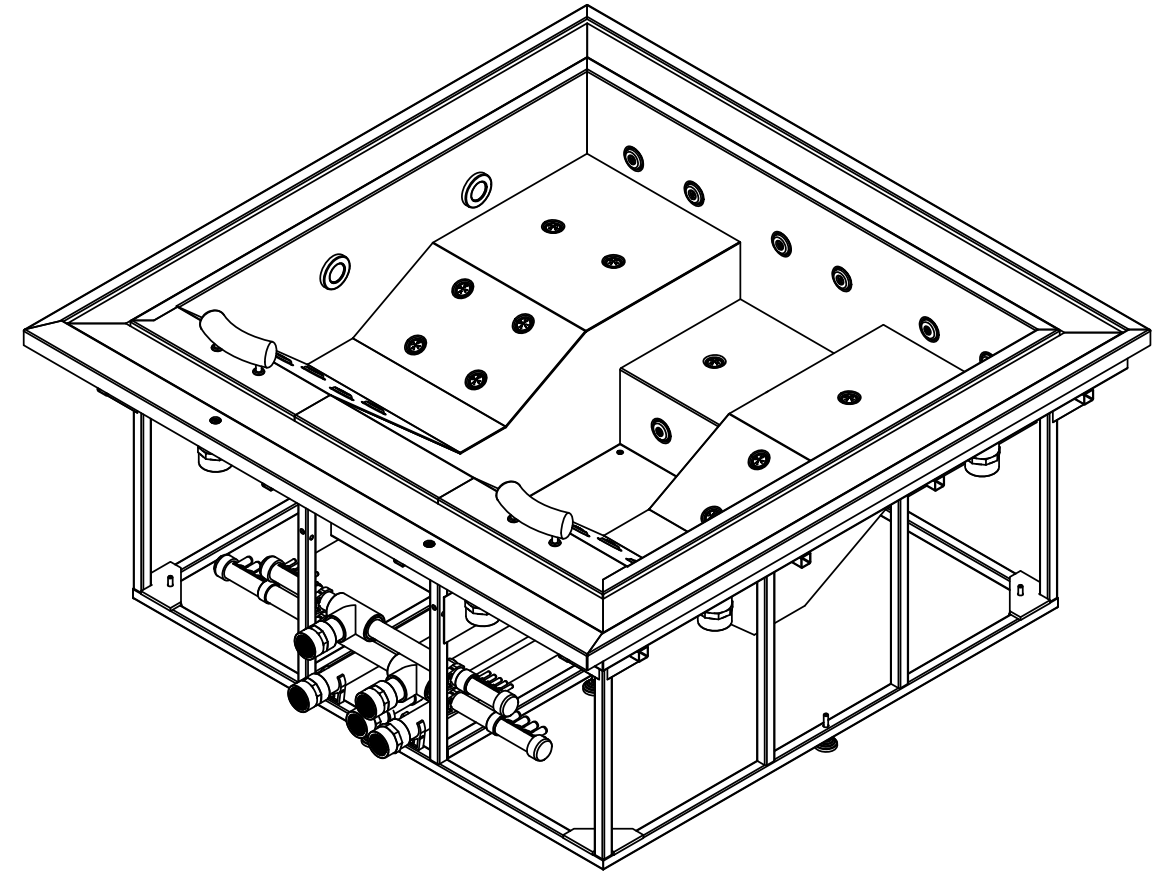


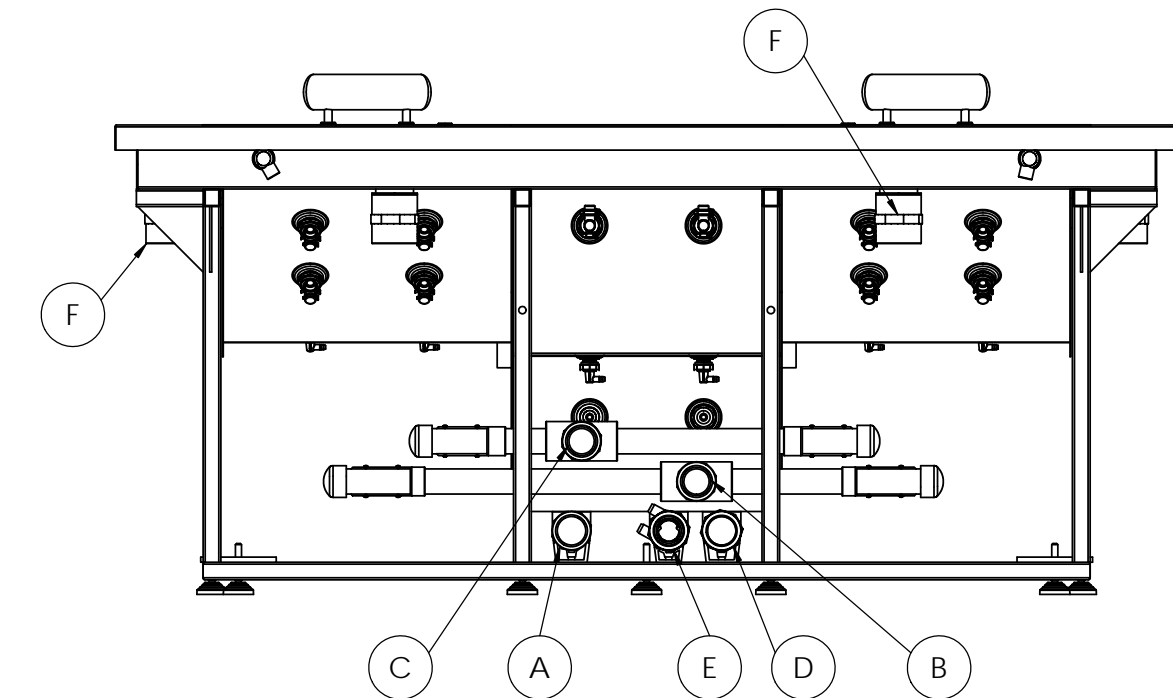
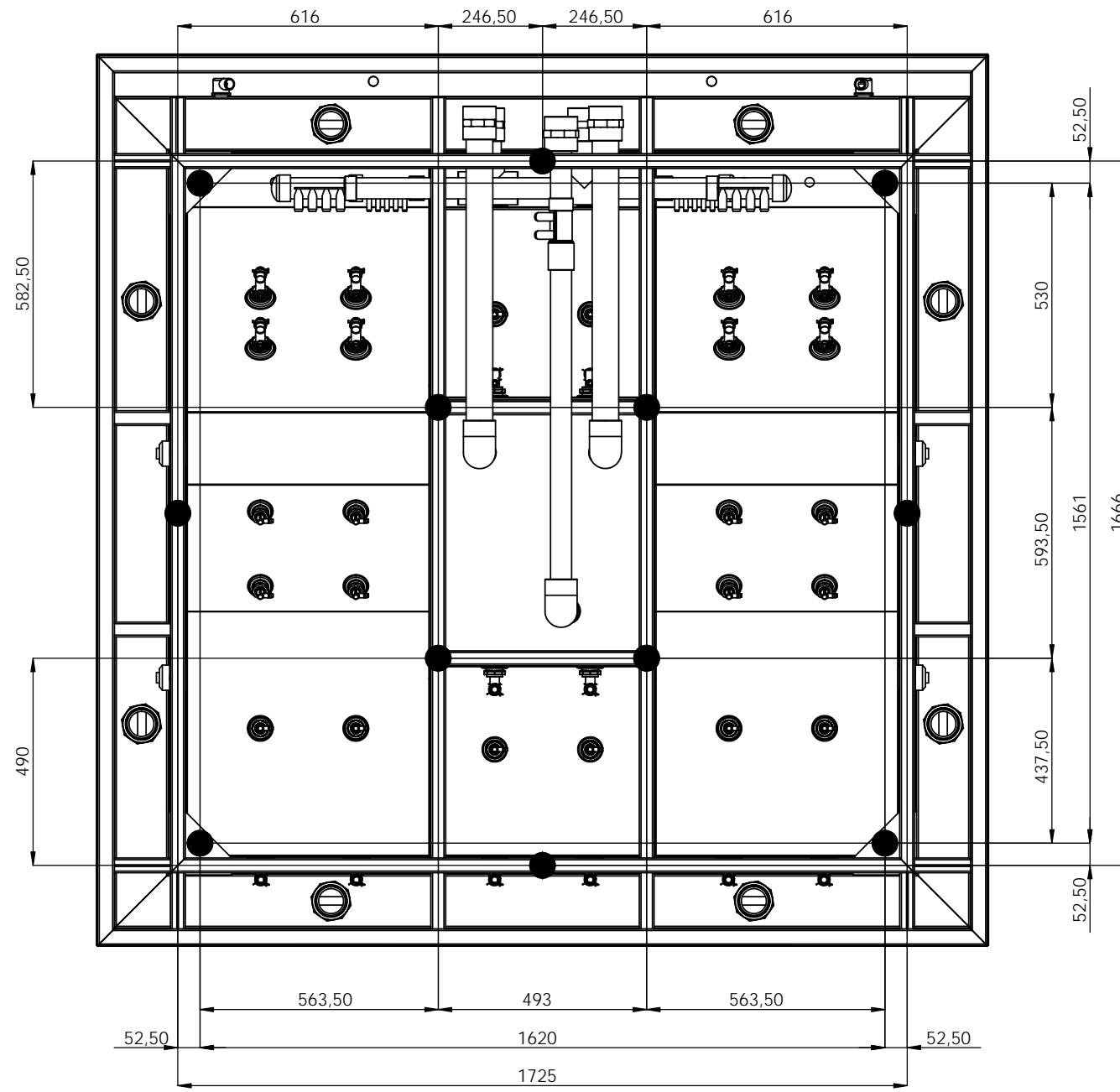
↑ ↑  
HYDRAULIC CONNECTIONS ACCESS



VALID FROM 15/01/2016

According to our policy of continuous improvement, dimensions, features or components of this product can be partially or completely changed without prior notice. It's Customer responsibility to verify that this is the last version of the drawing

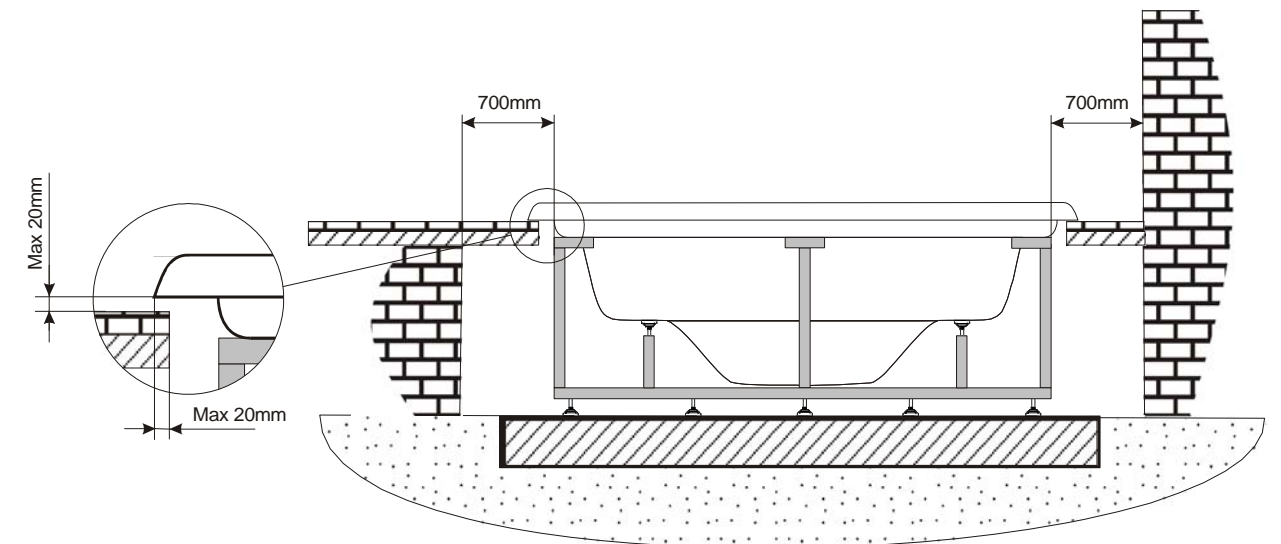
02	19/04/2016	I.Pozo	New Templates			
01	01/07/2011	J.Jorba				
Change No.	Date	Name	Modification			
Remarks				COMMERCIAL		
Dimensions in mm. General Tolerances +/- 10mm						
Drawn	14/10/2009	M.Baraut		Part Number	Rev.	First Angle Projection
Checked	14/10/2009	A.Deu		46027	02	
Scale 1:15	General Tolerance					
Sheet 1/3	DIN 7168 ISO 2768g					



A	Suction-Water Massage Pump 1	2" BSP FEMALE THREAD
B	Return-Water Massage Pump 1	2" BSP FEMALE THREAD
C	Return-Air Massage	2" BSP FEMALE THREAD
D	Suction-Filtration Pump Bottom Spa	2" BSP FEMALE THREAD
E	Return-Filtration Pump Inlets	2" BSP FEMALE THREAD
F	Overflow Drains (8x)	Ø75 FEMALE SOLVENT SOCKET

VALID FROM 15/01/2016

**WARNING:**  
It's essential to keep a minimum clearance access of **700mm** all around.

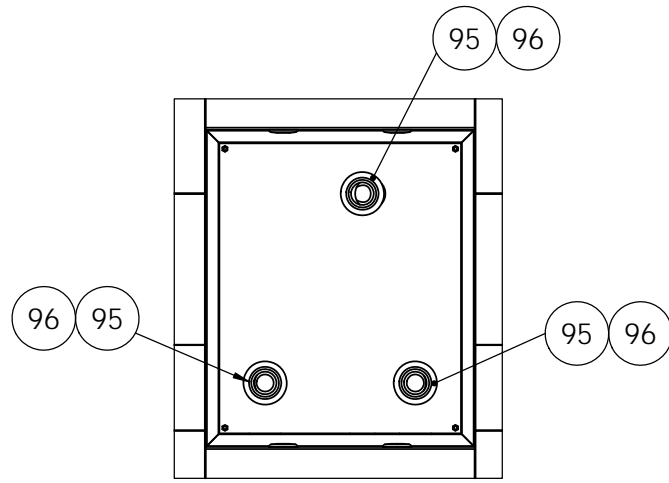


According to our policy of continuous improvement, dimensions, features or components of this product can be partially or completely changed without prior notice.  
It's Customer responsibility to verify that this is the last version of the drawing

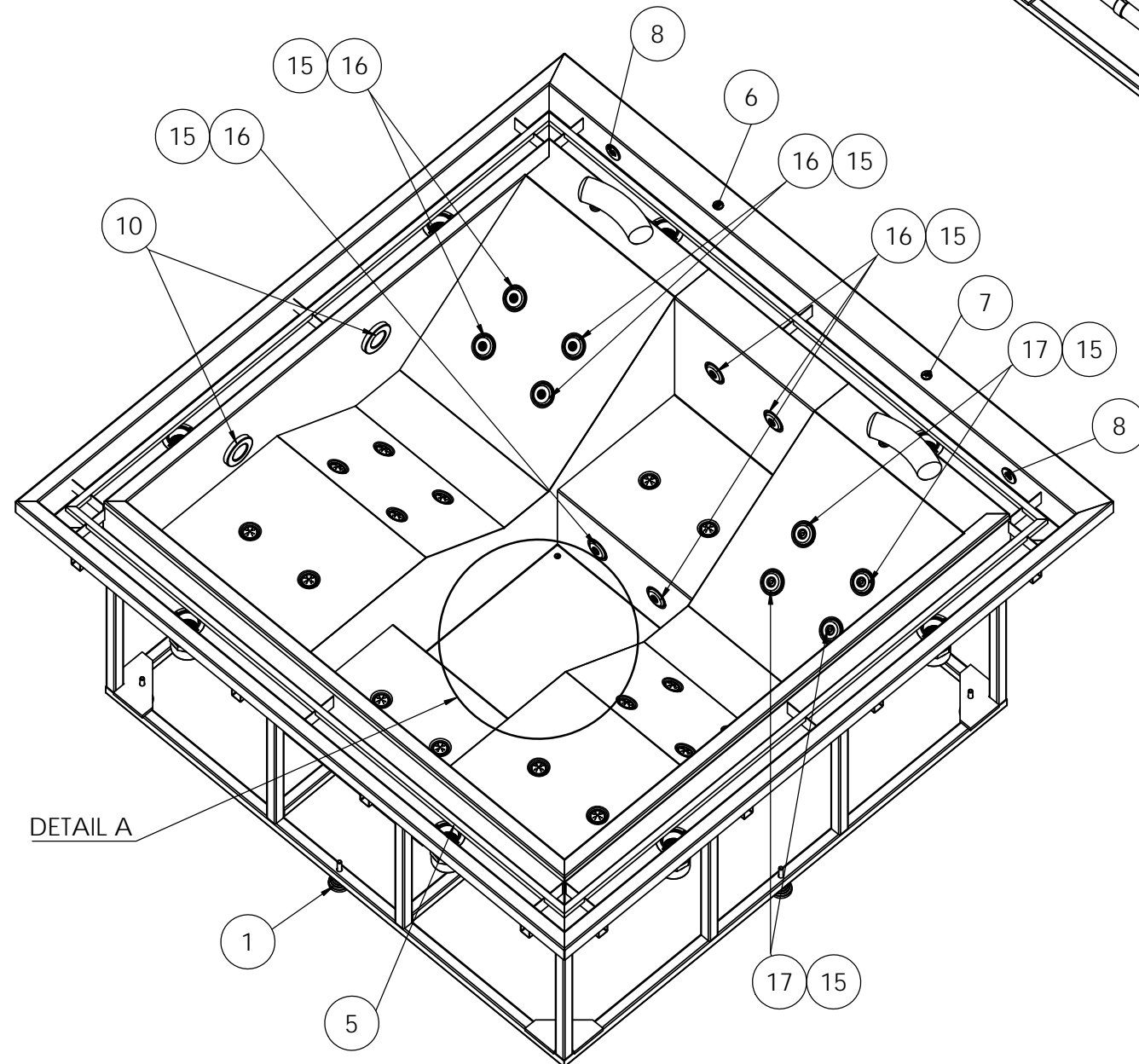
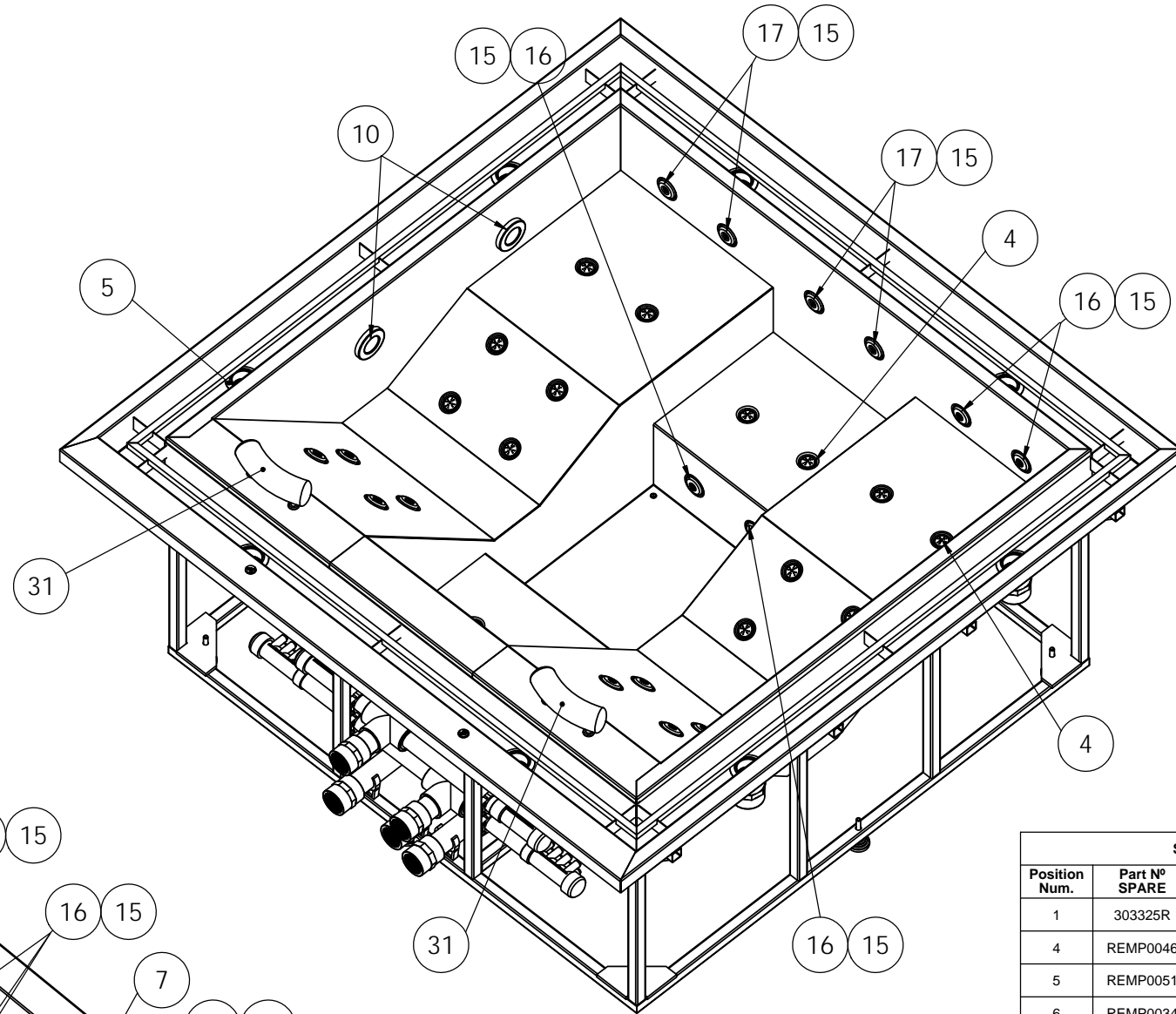
Change No.	Date	Name	Modification
02	19/04/2016	I.Pozo	New Templates
01	01/07/2011	J.Jorba	

Remarks Dimensions in mm. General Tolerances +/- 10mm			COMMERCIAL		
Drawn	14/10/2009	M.Baraut		Part Number	46027
Checked	14/10/2009	A.Deu		Rev.	02
Scale	1:15			General Tolerance	
Sheet	2/3		DIN 7168 ISO 2768g		



A (1 : 15)



DETAIL A

STAINLESS STEEL JETS + COLOUR LIGHT			
Position Num.	Part Nº SPARE	Description SPARE	Quant.
1	303325R	SPA SUPPORT	12
4	REMP0046	WHITE-STAINLESS STEEL AIR NOZZLE	16
5	REMP0051	WHITE SPA DRAIN 2 1/2"	8
6	REMP0034	DIGITAL BUTTON IP68 ALUM. AIR	1
7	REMP0033	DIGITAL BUTTON IP68 ALUM. WATER	1
8	RPOR0003	GREY DRAIN SET - BODY+COVER+ASSEMBLY	2
10	RCOM0063	HIGH INTENSITY COLOURS LED SPOTLIGHTS + STEEL ESCUTCHEON SPOTLIGHT	4
15	RPOR0235	JET BODY SET RD 2"	20
16	RPOR0230	FRONTAL JET 2" STAINLESS STEEL DIRECTIONAL	12
17	RPOR0260	JET TWIN ROTO 2" INOX	8
31	REMP0061	BLACK ROUND HEADREST SPA	2
95	04035R0000	BASE BOQUILLA IMP.SPA (R. INT)	3
96	04034R0001	J.PLANA 59X81X4 EPDM 55 BL	6

VALID FROM 15/01/2016

According to our policy of continuous improvement, dimensions, features or components of this product can be partially or completely changed without prior notice. It's Customer responsibility to verify that this is the last version of the drawing

02	19/04/2016	I.Pozo	New Templates				
01	01/07/2011	J.Jorba					
Change No.	Date	Name	Modification				
Remarks							
Dimensions in mm. General Tolerances +/- 10mm							
Drawn	14/10/2009	M.Baraut	<div style="text-align: center;"> </div>				
Checked	14/10/2009	A.Deu					
Scale: 1:7.5	General Tolerance DIN 7168 ISO 2768g						
Sheet 3/3			<table border="1" style="width: 100%;"> <tr> <td colspan="2" style="text-align: center;"><b>SPARE DRAWING</b></td> </tr> <tr> <td>Part Number <b>46027</b></td> <td>Rev. <b>02</b></td> </tr> </table>	<b>SPARE DRAWING</b>		Part Number <b>46027</b>	Rev. <b>02</b>
<b>SPARE DRAWING</b>							
Part Number <b>46027</b>	Rev. <b>02</b>						
			<table border="1" style="width: 100%;"> <tr> <td>First Angle Projection</td> </tr> </table>	First Angle Projection			
First Angle Projection							