

CASA BIUI

AURORA



GENERAL INFORMATION

CASA BLUI – AURORA

Capacity : 6 people

Seating positions: 10 positions

Dimensions: 105.1" x 88.9" x 39" / 267 x 226 x 99 cm

The Aurora is a rectangular-format spa designed for intimate relaxation. With four ergonomically arranged positions, it provides an inviting environment for gatherings or personal retreats.

Its 30 water jets and 14 air jets create a versatile massage experience, complemented by aromatherapy for an added sensory dimension. Ultraviolet treatment keeps the water fresh and clean, while the digital control panel allows effortless adjustments for temperature and jet functions.

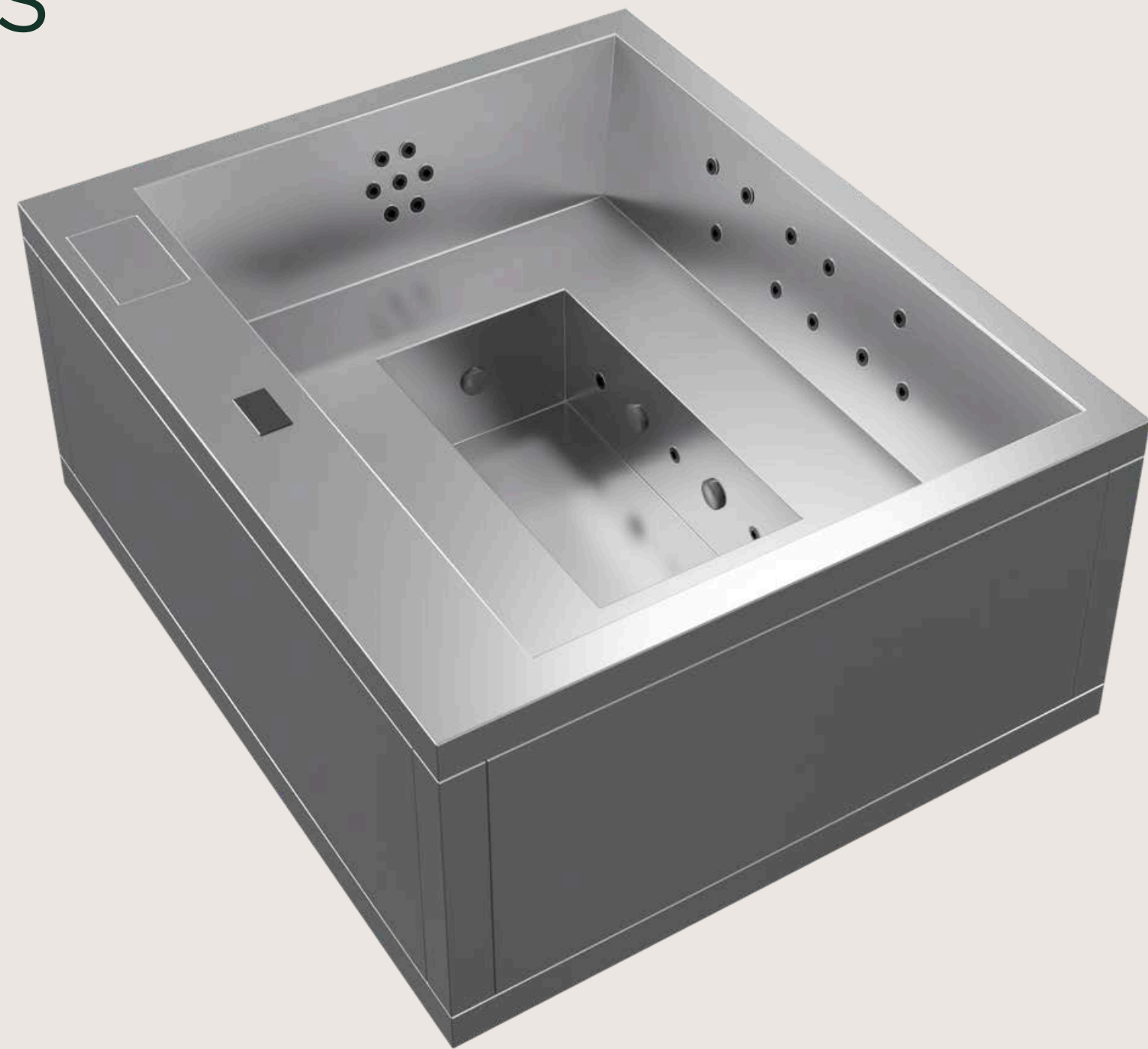
Built on a galvanized steel frame and durable ABS base, the Ember includes an energy-saving cover, making it practical for daily use while maintaining efficiency and long-lasting performance.





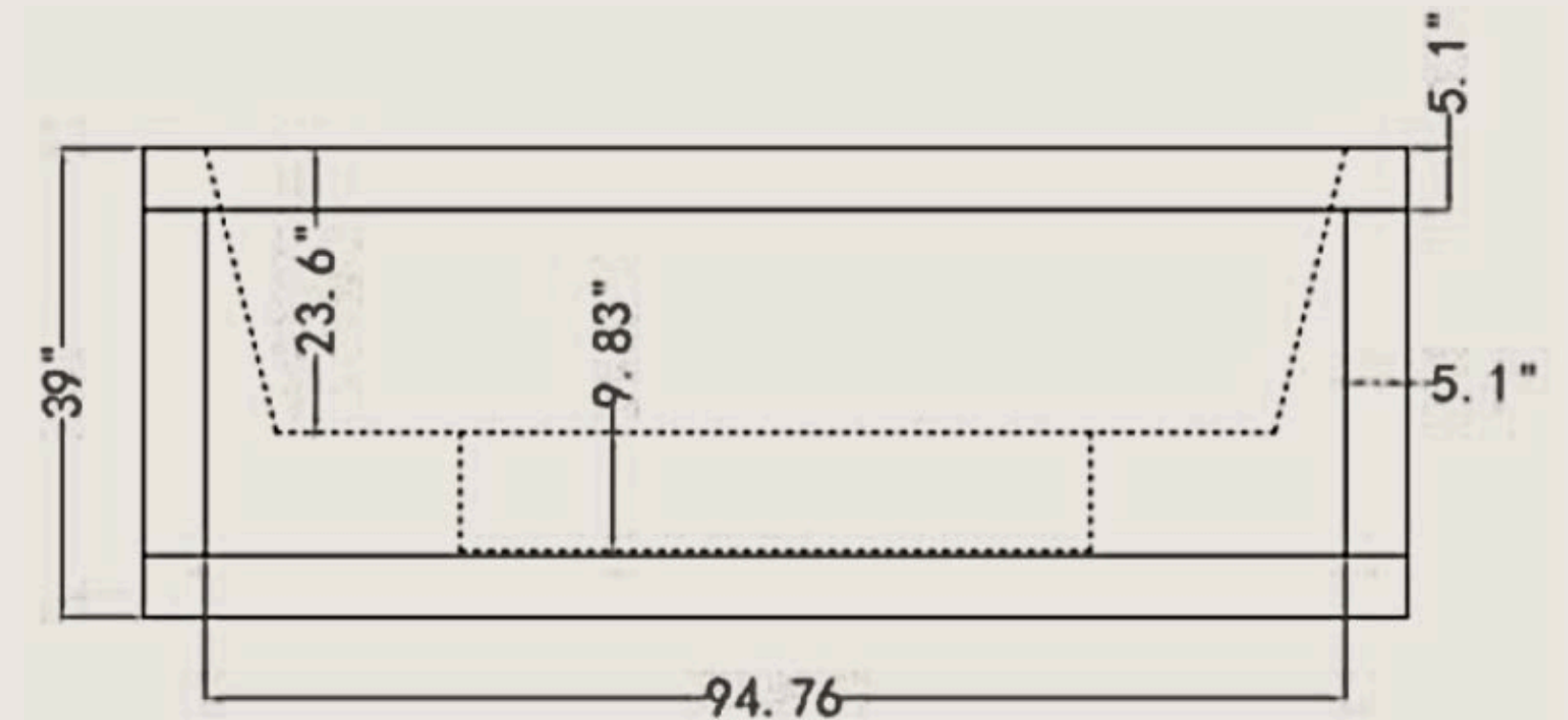
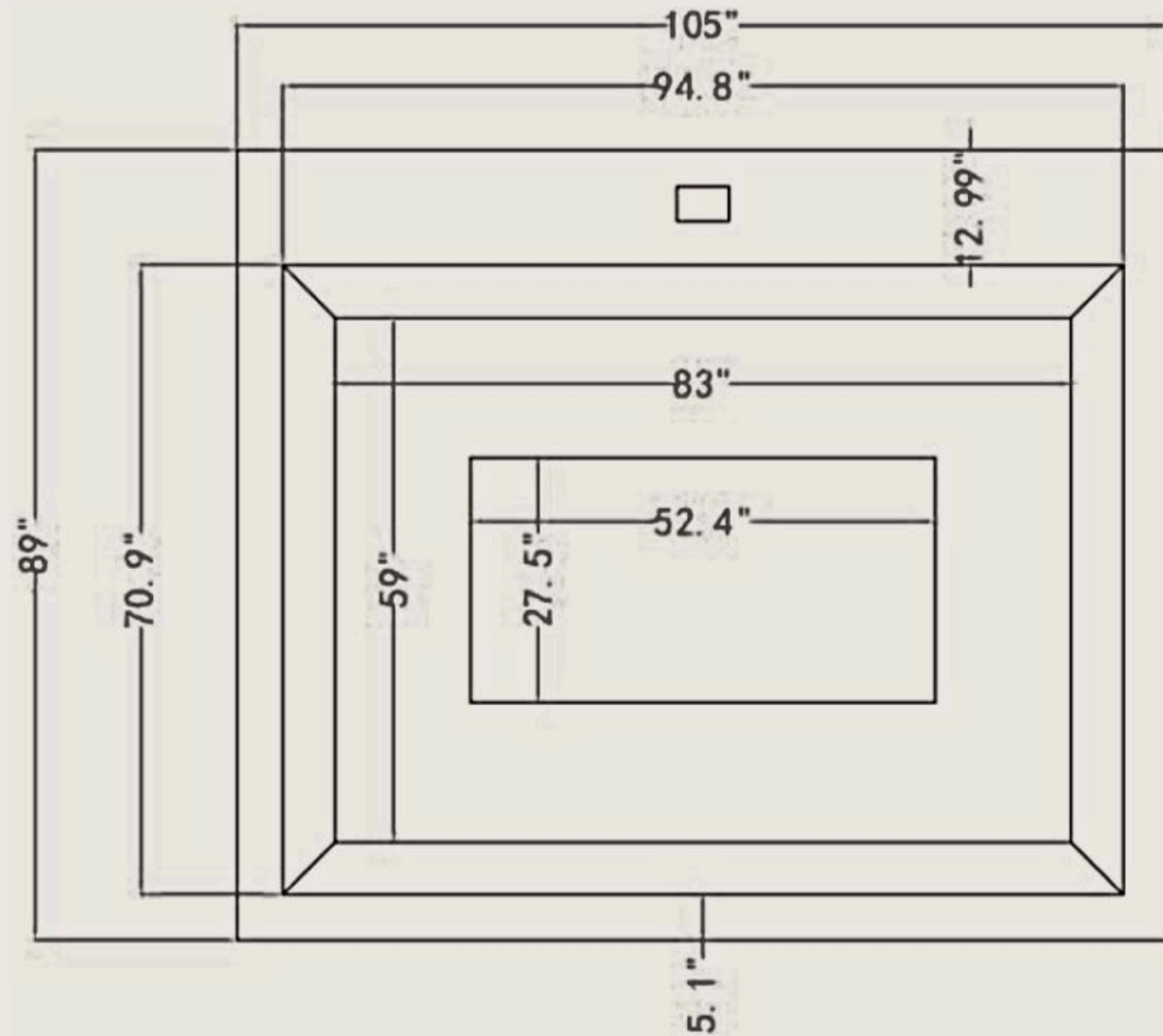
TECHNICAL SPECIFICATIONS

Dimensions:	105.2" x 88.9" x 39"
Water Capacity:	3249 L
Dry Weight:	1587 lbs
Filled Weight:	8750 lbs
Power Requirement:	50A - 220V/60Hz
Water Massage Pump:	3 HP
Recirculation Pump:	200 W
Water Heater:	3 000 W
Filter Type:	Cartridge





TECHNICAL DRAWINGS





KEY FEATURES & BENEFITS

Ergonomic Seating Configuration

Ten upright seats with multiple hydrotherapy settings for the best experience.

Massage System

30 stainless-steel hydro-jets and 14 air nozzles deliver targeted relief from neck to calves.

Smart Control & Connectivity

Intuitive touch-panel operation with optional Wi-Fi Spa Control for remote scheduling and diagnostics.

Advanced Water Care

Standard UV treatment and optional ozonator keep water crystal-clear with minimal chemical use.

Thermal Efficiency

Special Insulation System and eco-efficient cabinet reduce heat loss by up to 25%, lowering operating costs.

Customizable Ambience

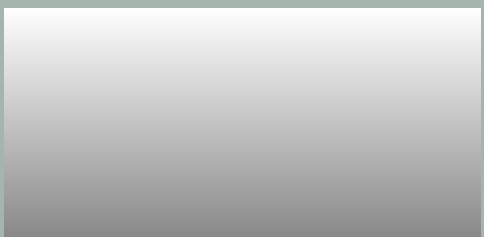
Colour Sense LED lighting package and optional Surround Bluetooth Audio let users personalize mood and sound.





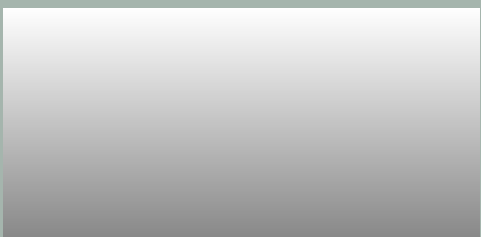
FINISHES & OPTIONS

Interior Cabinet



Stainless Steel

Exterior Cabinet



Stainless Steel





PRE INSTALLATION REQUIREMENTS

Delivery access & clearance

Ensure there's a clear path from the street/front door to the final spa location with at least ~15" extra clearance, and confirm if any special equipment (e.g., crane/forklift) is needed. This prevents last-minute logistics failures and damage during handling.

Structural foundation

The site must be level, structurally sound, and preferably a reinforced concrete pad $\geq 4"$ thick (with rebar/wire mesh), proper slope for runoff ($\leq \frac{1}{2}"$ over 8 ft), and free of hollows/bumps. It must be able to sustain 6000 lbs. This protects the shell and plumbing from torsion and uneven loading over time.

Service clearances

Maintain ~20" around all four sides; for built-ins, include removable panels for full service access. Adequate working room is essential for future maintenance, leak checks, and component replacement without demolition.

Electrical supply & protection

Provide a dedicated 220–240 V, 60 Hz single-phase circuit with a 50–60 A breaker per spec, copper conductors of the correct gauge, and clear access to the main breaker or GFCI disconnect. Proper power sizing and protection are critical for heater/pump performance and user safety.

Drainage & ventilation (built-in)

Onstall a 1.5" drainage hose for controlled emptying and at least two ~5.9" diameter vents to extract heat/moisture from the equipment bay. This prevents moisture accumulation, protects electronics, and aids thermal performance.



INSTALLATION REQUIREMENTS

Electrical safety & configuration

Verify a dedicated 50–60 A breaker, correct cable gauge for run length, secure F+N+T terminations, proper earth/ground, 230 V $\pm 10\%$ at the conduit, correct control-box DIP settings, and Group-2 output at 230 V. This prevents nuisance trips, under-voltage heating issues, and safety hazards.

Load & serviceability of the installation

Confirm the spa is level on a surface designed to bear full operating weight, maintain ~20" service clearance on all sides, and provide drainage for splash/leak water. This protects the shell/plumbing from stress and ensures future maintenance access.

Hydraulic integrity

Open and lock all gate valves and inspect thoroughly for leaks under/inside the cabinet. Catching leaks now avoids damage to electrics, framing, and finishes.

Water chemistry baseline

Fill from the top (or through the filter), set pH to 7.2–7.6, and ensure disinfectant is in range (Cl: 0.5–1.5 ppm; Br: 2.2–3.3 ppm). Proper start-up chemistry protects surfaces, seals, and bathers, and stabilizes commissioning.

Functional verification under load

Check jets (all open, strong flow), venturi valves, control panel (no errors), circulation pump, jet pumps, blower, lights, and UV/ozone system. Confirm total draw (all loads on) does not exceed 50 A. This proves the system performs as specified before handover.



SPA COVER

Introducing the PRIME TEX COVER, a new generation of spacovers designed to elevate the elegance and functionality of your spa experience. Created with an eye for sophistication, these covers combine premium aesthetics with advanced material technology, making them the perfect complement for any exclusive or premium spa model.

The PRIME TEX COVER embodies a refined style while offering superior protection and durability, ensuring your spa maintains its pristine look over time. Experience the perfect balance of beauty and performance with our latest innovation, crafted to enhance the luxury and comfort of your relaxation space.

This premium fabric ensures that the cover not only looks sophisticated but also withstands the elements, making it ideal for both indoor and outdoor use. The carefully chosen material is designed to resist wear and tear, extending the lifespan of the cover while providing an elegant and inviting look that complements the spa's aesthetics.

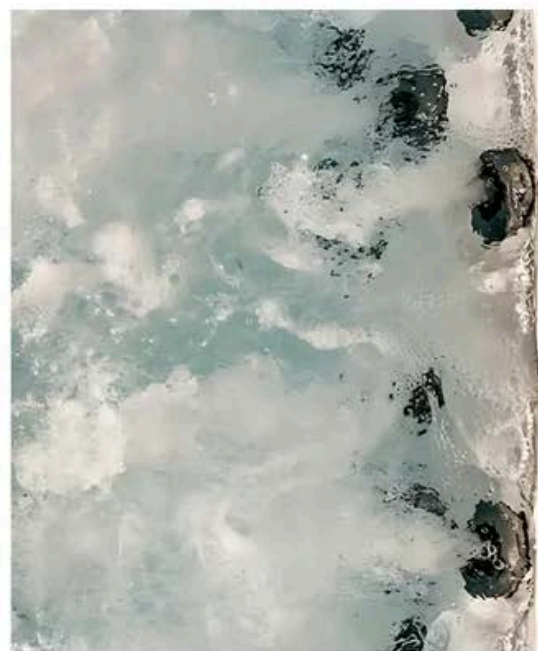




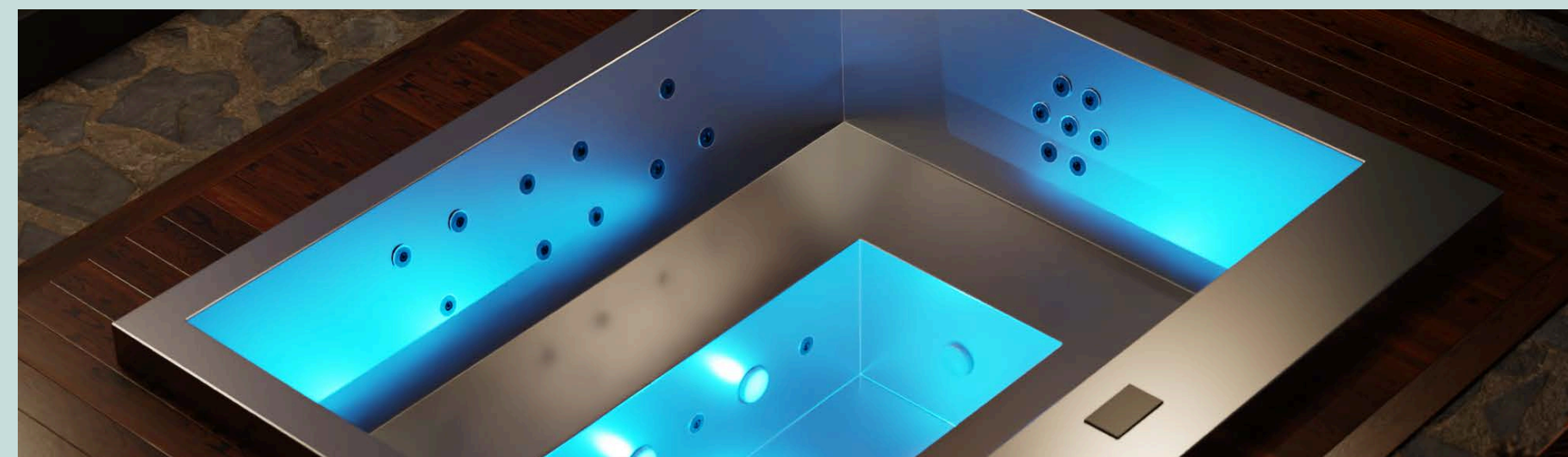
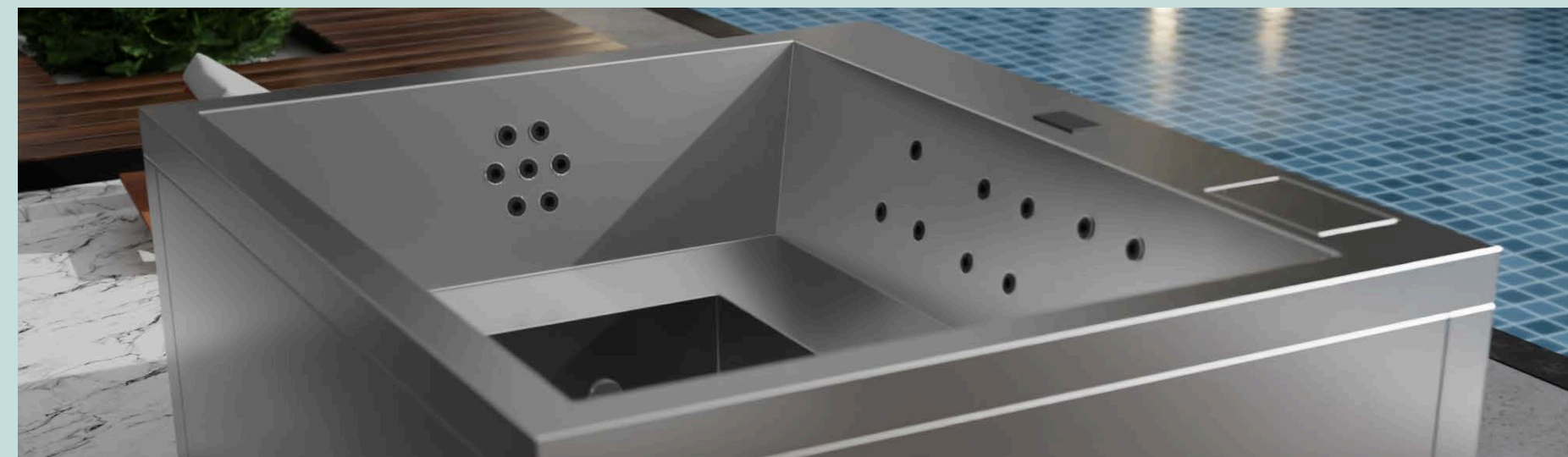
WARRANTIES



15 Years for Frame



2 Years for Components






CONTACT & SUPPORT

Luis Acosta - Operations & Logistics department Head

 (305) 701-4085

 operations@casablui.com

Rodrigo Mirarchi - After Sales Deparment Head

 (310) 304-5872

 support@casablui.com

Marce Groenewald - Sales Deparment Head

 (305) 701-4029

 sales@casablui.com



CASA BLUI

Casa Blui
Operational Headquarters:
Miami, Florida, USA
Phone (+1) 305 701 4029
sales@casablui.com / www.casablui.com